

PRODUCT GUIDE

ANASTASIA
BEVERLY HILLS

BROWS



BROW PRIMER

PRIME + PREP. HOLD HAIR IN PLACE.

PRICE \$21 US / \$27 CAD / £22 GBP

A colorless wax pencil that holds brow hairs in place and creates the ideal base for a seamless **Brow Powder Duo** application as it adheres color to skin.

WHY YOU'LL LOVE IT

- Adheres **Brow Powder Duo** to skin and hair
- Helps tame your brow hair and create natural-looking textured brows
- Ideal for those with sparse brows and who would like to achieve a cleaner-looking brow shape
- Cruelty-free and vegan

HOW TO APPLY

Apply one swipe of **Brow Primer** across the entire brow, extending from the front to the tail end. Using the spoolie end of **Brush 7B**, comb the product through the brow to evenly coat the hairs.

PRO TIPS

- One swipe of **Brow Primer** is enough to evenly distribute the product.
- Apply to sparse areas of the brow to prep and prime skin for **Brow Powder Duo** to adhere to.
- To achieve the look of hair-strokes, saturate **Brush 7B** with **Brow Primer**, pinch the fibers into a clean, sharp angle, dip into **Brow Powder Duo**, and then stamp into brows. This ultra-thin angled brush allows you to create hairlike microstrokes with expert precision.
- For those with unruly brow hair, **Brow Primer** gives a little extra hold, making the hair more flexible and easier to control. Apply **Brow Primer** to help hair lie in the correct direction before applying any color product.

PRODUCT PAIRINGS

Brow Powder Duo
Stencils
Brush 7B
Sharpener

BROW POWDER DUO

ELEVEN SHADES. TWO-TONED. EASY-TO-BLEND FORMULA.

PRICE \$23 US / \$30 CAD / £24 GBP

A two-shade brow powder compact that allows you to perfect the ombré brow technique and give brows a naturally textured look.

WHY YOU'LL LOVE IT

- Each compact includes two shades that allow you to customize your brow shade and achieve the ombré brow technique
- Finely milled formula delivers buildable intensity and seamless blending
- Smooth, velvety texture allows the product to adhere to the skin with ease
- Carefully selected shade range is designed to match your hair color
- Includes a mirror for on-the-go touch-ups
- Cruelty-free and vegan
- Available in 11 shades

HOW TO APPLY

For a natural ombré effect, fill the front of the brow using the lighter shade of the duo pan. Then, use the darker shade to fill from arch to tail.

PRO TIPS

- Prep brows with one swipe of **Brow Primer** to help **Brow Powder Duo** adhere to the skin.
- Apply and blend **Brow Powder Duo** using **Brush 7B**.
- To achieve the look of hair-strokes, saturate **Brush 7B** with **Brow Primer**, pinch the fibers into a clean, sharp angle, dip into **Brow Powder Duo**, and then stamp into brows. This ultra-thin angled brush allows you to create hairlike microstrokes with expert precision.
- Can also be used in the hairline for root touch-ups.

PRODUCT PAIRINGS

Stencils
Brush 7B
Brow Primer

SHADE BREAKDOWN



BROW PRO PALETTE

PRO ARTIST PALETTE. MATCH ANY CLIENT.

PRICE **\$88 US / \$114 CAD / £99 GBP**

An essential palette that contains all 11 shades of Anastasia Beverly Hills **Brow Powder Duo**, plus **Brow Primer**.

WHY YOU'LL LOVE IT

- A professional pro artist brow palette containing all 11 shades of **Brow Powder Duo**, plus **Brow Primer**
- Exclusive brow powder collection with a shade range that is designed to universally match every hair color, skin tone and undertone
- Each two-shade brow powder pan can be used to create an ombré brow look or mixed together to create custom brow shades
- **Brow Powder Duo's** finely milled, buildable formula is ideal for creating a range of brow looks, from natural to dramatic
- The smooth, velvety texture allows the product to adhere to the skin and blend with ease
- **Brow Primer's** smooth wax formula holds hair in place and creates the ideal base for your **Brow Powder Duo** to adhere
- Cruelty-free and vegan

HOW TO APPLY

- Create a range of looks—from natural to ombré to bold. Start by applying the lighter shade of your chosen **Brow Powder Duo** pan to the front end of the brow, followed by the deeper shade on the tail end to achieve an ombré effect. Fill in sparse areas of the brow using the darker shade.
- Use the lighter shade to create a background color; use the darker shade to detail the brow.

PRO TIPS

- Apply and blend **Brow Powder Duo** using **Brush 7B**.
- Mix shades together for customization.
- Can be used as an eye shadow to contour the eye crease.
- Use a shade similar to your hair color to fill in sparse areas at the hairline or for root touch-ups.

PRODUCT PAIRINGS

Stencils
Brush 7B
Pro Pencil

SHADE BREAKDOWN



BROW WIZ®

TWELVE SHADES. ULTRA-THIN. PRECISION DETAILING PENCIL.

PRICE \$23 USD / \$28 CAD / £23 GBP



An ultra-slim, retractable pencil used to outline and detail brows.

WHY YOU'LL LOVE IT

- Ideal for outlining brows and adding precise detail
- Fine tip creates tiny hairlike strokes in areas of sparseness
- Features the perfect blend of wax and color that delivers high payoff
- Creates the appearance of fullness and added texture
- Custom spoolie brush blends for a natural-looking finish
- Cruelty-free and vegan
- Available in 12 shades

HOW TO APPLY

1. Outline the under arch of the brow toward the tail. Blend using the spoolie.
2. Outline the upper arch and blend.
3. Add hairlike strokes to the front of the brow for detail and dimension.
4. Lightly sketch throughout sparse areas in the direction of hair's natural growth. Blend for a natural-looking finish.

PRO TIPS

- Use **Brow Wiz®** to map out the three points of the **Golden Ratio®** along the brow.
- To achieve the hair-stroke technique, hold **Brow Wiz®** at a slant, lightly place the tip of the pencil onto the brow area, apply pressure at the bottom, and then flick your wrist. This creates a follicle effect at the base.
- For a multidimensional look, first fill in the brow with a lighter shade of **Brow Powder Duo** using **Brush 7B**. Then, use a darker shade of **Brow Wiz®** to detail with tiny hairlike strokes.
- Warm up the fine tip on the back of your hand; this allows for a creamy application.

PRODUCT PAIRINGS

Brow Powder Duo
DIPBROW® Gel
Clear Brow Gel

SHADE BREAKDOWN



BLONDE
Blonde hair with warm/
gold undertones



TAUPE
Blonde hair with cool/
ash undertones



STRAWBURN
Strawberry Blonde to
Light-Red hair with
warm undertones



SOFT BROWN
Light Brown hair with
warm/cool undertones



CARAMEL
Red hair with a light
undertone



AUBURN
Red hair with a dark
undertone



CHOCOLATE
Medium Brown hair with
warm/gold undertones



MEDIUM BROWN
Medium Brown hair with
cool/ash undertones



ASH BROWN
Grey hair with cool/ash
undertones



DARK BROWN
Dark Brown hair with a
warm undertone



EBONY
Black hair with a warm
undertone



GRANITE
Black hair with a cool
undertone

BROW DEFINER

TWELVE SHADES. TRIANGULAR TIP. ALL-IN-ONE FILL AND DETAIL

PRICE \$23 USD / \$30 CAD / £24 GBP

An all-in-one triangular-tipped pencil for defining, filling and detailing brows.

WHY YOU'LL LOVE IT

- Triangular tip showcases three different-sized edges for multifunctional use and versatility in application
- Use the flat side for shading and outlining the brows. Use the medium side to fill and define. Use the fine tip to create hairlike detail.
- Formula features the perfect balance of wax and pigment for easy application (without skipping) and blending
- Soft, custom spoolie specifically designed for blending **Brow Definer's** formula into brow hairs for a natural-looking finish
- Cruelty-free
- Available in 12 shades

HOW TO APPLY

When using **Brow Definer**, start by defining the brow shape. Comb brow hairs upward with the spoolie. Then, using the flat side of the pencil tip, outline the bottom of the brow from arch to tail. Next, comb brow hairs downward and outline the top of the brow from arch to tail. Comb the hairs back in place and fill in the brow from arch to tail using the medium side of the tip. Next, using the fine tip, detail the front of the brow and areas of sparseness by creating hairlike strokes. Starting at the base of the front of the brow, press the tip down and pull up in the direction of hair's natural growth. Continuously blend throughout application.

PRO TIPS

- Begin by exposing only a small amount of product (about 2–3 millimeters); this allows for maximum control of the pencil and prevents overextension when applying. Remember all ABH products are highly pigmented, so little pressure is required.
- For a quick, on-the-go application, use the flat side of the pencil to outline the top and the bottom of the brow, then shade in the center.
- Keep **Brow Definer** sharp by lightly swiping the tip on a piece of paper. Start by exposing a small amount of product, then gently run the widest side of the pencil in an up-and-down motion on a flat sheet of paper. This will restore its shape and refresh the tip and sides.

PRODUCT PAIRINGS

Brow Wiz®
Pro Pencil
Clear Brow Gel

SHADE BREAKDOWN



BLONDE

Blonde hair with warm/
gold undertones



TAUPE

Blonde hair with cool/
ash undertones



STRAWBURN

Strawberry Blonde to
Light-Red hair with
warm undertones



SOFT BROWN

Light Brown hair with
warm/cool undertones



CARAMEL

Red hair with a light
undertone



AUBURN

Red hair with a dark
undertone



CHOCOLATE

Medium Brown hair with
warm/gold undertones



MEDIUM BROWN

Medium Brown hair with
cool/ash undertones



ASH BROWN

Grey hair with cool/ash
undertones



DARK BROWN

Dark Brown hair with a
warm undertone



EBONY

Black hair with a warm
undertone



GRANITE

Black hair with a cool
undertone



BROW PEN

FEATHERLIGHT STROKES. FULLER-LOOKING BROWS.

PRICE \$22 USD / \$30 CAD

Superfine-tipped detailing pen that creates natural-looking brow hairs.

WHY YOU'LL LOVE IT

- Details and defines brows for a fuller-looking finish
- Superfine and firm brush-tip creates realistic looking, thin hair-strokes
- Easy-to-apply pen that adds dimension and defines the brow shape
- Waterproof formula glides on effortlessly with a featherlight feel
- Ideal for all skin and brow types—adhering to both skin and hair
- Mimics the look of natural brow hair and texture
- The specially designed brush-tip won't clog or skip and is not made of felt
- Available in 9 shades that are true to color with a wide range of cool and warm undertones

HOW TO APPLY

STEP 1: DETAIL

Shake **Brow Pen** in downward motions. On clean, dry skin, apply **Brow Pen** in the areas you are more sparse—working in the direction of hair growth. Lightly etch in any areas you want added detail and definition. Let it dry for 20 seconds.

STEP 2: FINISH

Brush **Clear Brow Gel** through brows in short, upward strokes.

ANASTASIA TIP

"Start applying from the middle of your brow (arch) to the end—that way you get used to the flow of the ink and how much pressure to use. Then when you get to the front part of the eyebrows you will put less pressure for a lighter look."

PRO TIPS

- Little pressure is needed when applying.
- Apply hair-strokes in the direction of hair growth for a natural-looking finish.
- Use two shades together to create a natural, ombre effect. Apply a lighter shade in the front of the brow, and a deeper shade from arch to tail.
- Store with the tip down for best performance.
- Can be used on the face to create faux freckles.
- Apply **Brow Pen** before complexion to let it set while you do your makeup.
- If you have oily skin, use toner around the brow area to create a clean, dry surface before applying.

SHADE BREAKDOWN



BLONDE

Blonde hair with warm/gold undertones



TAUPE

Blonde hair with cool/ash undertones



CARAMEL

Red hair with a light undertone



SOFT BROWN

Light Brown hair with warm/cool undertones



MEDIUM BROWN

Medium Brown hair with cool/ash undertones



CHOCOLATE

Medium Brown hair with warm/gold undertones



DARK BROWN

Dark Brown hair with a warm undertone



EBONY

Black hair with a neutral undertone



GRANITE

Black hair with a cool undertone

PRODUCT PAIRINGS

Pro Pencil
Brush 20
Brow Definer
Lip Gloss

THIS FORMULA IS:

Cruelty-Free, Vegan, Fragrance-Free, Paraben-Free, Gluten-Free, Phthalate-Free, Mineral-Oil-Free, Alcohol-Free, Talc-Free



PERFECT BROW PENCIL

EIGHT SHADES. NATURAL EFFECT.

PRICE **\$23 US / \$30 CAD / £24 GBP**

A traditional wooden pencil with a powder-like formula for filling and defining brows.

WHY YOU'LL LOVE IT

- Full-pigment powder-like formula goes on smoothly, letting you create natural-looking texture throughout the brow
- Soft, durable custom spoolie designed for seamlessly blending **Perfect Brow Pencil**'s formula through the brow hairs
- Delivers a natural-looking, powder-matte finish
- Easy to use and offers maximum control
- Can be sharpened to a fine point for precise application
- Cruelty-free and vegan
- Available in 8 shades

HOW TO APPLY

1. Using the spoolie, comb brow hairs upward and begin defining and filling in the lower arch of the brow.
2. Next, comb brow hairs downward and fill in the tail end of the brow.
Continuously blend throughout application to achieve a natural-looking brow.
3. Finish by filling the front end of the brow using minimal product, working in the direction of hair's natural growth.

PRO TIPS

- Use light pressure when applying **Perfect Brow Pencil**, as product is fully pigmented and easily blendable.
- For a quick application, use the side of the pencil's tip to fill in brows.
- Warm up the tip of the pencil on the back of your hand; this allows for maximum color payoff.

PRODUCT PAIRINGS

Pro Pencil
Tinted Brow Gel
Sharpener

SHADE BREAKDOWN



DIPBROW® POMADE

ELEVEN SHADES. WATERPROOF. SMUDGE-PROOF.

PRICE \$21 US / \$24 CAD / £19 GBP

A full-pigment, waterproof pomade that can be used to fill and detail brows.

WHY YOU'LL LOVE IT

- Long-wearing, smudge-resistant, waterproof formula
- Creamy texture is easy to pick up on the brush, glides on smoothly, adheres without building too much, and blends out for a natural-looking finish
- Allows for versatility in application, from natural-looking hairs to bold outlining and filling
- Highly pigmented pomade formula mimics hairlike texture, making it ideal for creating hair where it is sparse or adding volume to hair that already exists
- Although waterproof, the formula allows time for blending before drying to a matte finish
- Cruelty-free and vegan
- Available in 11 shades

HOW TO APPLY

- Start with minimal product on **Brush 12**.
- Comb brow hairs upward using the spoolie. Outline the lower arch. Blend using the spoolie.
- Comb hairs downward, outline the upper arch and lightly blend.
- Fill inside the tail of the brow in the direction of hair's natural growth. Blend throughout for natural-looking results.
- Fill in the front of the brow using the remaining product on the brush, creating a softer gradient effect.

PRO TIPS

- The pomade formula is highly pigmented, so a little goes a long way.
- Use light pressure when applying. Blend with the spoolie after each step for a natural-looking finish.
- When loading product onto your brush, work off the top of the cap. This way, you don't pick up too much product and are able to keep the brush thin by working side to side.
- Keep the cap sealed so the waterproof formula doesn't dry out. If you need to refresh the product, add a drop of **Hydrating Oil**.

SHADE BREAKDOWN



PRODUCT PAIRINGS

Highlighting Duo Pencil
Brush 12
Brow Wiz®

DIPBROW® GEL

FOR FULLER-LOOKING BROWS THAT LAST.

PRICING \$18 US + \$23 CAD + £19 GBP

A highly pigmented brow gel featuring a long-lasting, waterproof formula for creating fuller-looking, defined brows.

WHY YOU'LL LOVE IT

- Long-lasting, waterproof formula (up to 12 hours!)
- Color can be applied directly onto the brow hairs and skin
- Creates the appearance of natural dimension and fullness
- Easy-to-apply formula fills, details and adds volume to brows
- Sets to a natural-looking matte finish that stays in place
- Small, cone-shaped brush delivers the perfect amount of color and fits perfectly within the brow
- Precision tip for exact detailing
- Formulated without parabens
- Noncomedogenic and dermatologist tested
- Cruelty-free
- Available in 11 shades

HOW TO APPLY

- To fill brows with color, brush **DIPBROW® Gel** starting at the arch and extending toward the tail. Then, fill from the front of the brow toward the arch using the remaining product on the brush, moving in the direction of hair's natural growth.
- To fill in areas of sparseness, use the tip of the brush to apply the formula directly onto the skin, then blend the product through the brow.
- For fuller coverage, brush the gel through the brows a second time to create hairlike strokes.

SHADE BREAKDOWN

Includes the same shade assortment as **DIPBROW® Pomade**—with a NEW **Auburn** made especially for **DIPBROW® Gel**. The Gel formula's **Auburn** contains less brown to work better with custom red and deeper burgundy hair colors. Use alone for a closer match to custom hair colors or use with **DIPBROW® Pomade** for a more natural and balanced shade.

PRO TIPS

- **DIPBROW® Gel** works great on brows that already have full hair. However, the formula also works well on brows that have everything from fine hair to full hair, from smooth hair to thick, unruly hair, and can even fill in areas of sparseness.
- Create the look of full-feathered brows on any brow type by combing the wide side of the brush through the brows in an upward motion. The full pigment will grab onto existing hairs and add hairlike strokes on the skin, creating the effect of fuller hair.
- For clients with white hair, grey hair or colored hair, select the **DIPBROW® Gel** shade that most closely matches the client's natural hair color.
- Like **DIPBROW® Pomade**, the gel formula can also be applied to the brow by using a brow brush.
- To add more definition or dimension to your existing brow look, top with a layer of **DIPBROW® Gel** as a finishing touch.

PRODUCT PAIRINGS

DIPBROW® Pomade
Brow Wiz®
Clear Brow Gel





HIGHLIGHTING DUO PENCIL

DOUBLE SIDED. TWO FINISHES.

PRICE \$23 US / \$30 CAD / £24 GBP

A dual-sided pencil for highlighting and defining the brow bone.

WHY YOU'LL LOVE IT

- Includes both shimmer and matte finishes for a versatile application
- Formula glides on smoothly for easy blending
- Non-wax formula delivers a soft, creamy texture
- Size of the tip fits perfectly on the width of the brow bone
- Works great for on-the-go application
- Cruelty-free
- Available in 2 shades

HOW TO APPLY

- First, apply the shimmer end from arch to tail. Then, apply the matte end from the front of the brow toward the tail. Blend using **Brush 20** for a seamless brow highlight that adds a lifting effect to your brows.

PRO TIPS

- **Highlighting Duo Pencil** can also be used as an eye shadow primer. Use the shimmer end to prime for metallic, shimmer or duo chrome shadows. Use the matte end to prime for matte shadows.
- For an extra pop of shimmer in your eye look, apply **Highlighting Duo Pencil** to the inner corner of your eye for added brightness and intensity.
- The shimmer and matte ends can be worn separately or blended together.
- **Highlighting Duo Pencil** can also be used to highlight the high points of the face.

PRODUCT PAIRINGS

Perfect Brow Pencil
Brow Definer
Brush 20

SHADE BREAKDOWN



CAMILLE/SAND



SHELL/LACE

PRO PENCIL

THREE SHADES. MULTITASKING. PRECISION PERFECTER.

PRICE **\$18 US / \$20 CAD / £18 GBP**

A full-coverage highlighting and concealing pencil for defining the brow.

WHY YOU'LL LOVE IT

- Precise tip allows you to define the brow with precision
- Dries down to a matte finish
- Wide side of the pencil perfectly covers the width of the brow bone, delivering the ideal amount of highlight
- Blendable formula has multifunctional use for brows and complexion
- Cruelty-free and vegan
- Available in 3 shades

HOW TO APPLY

- Start by applying **Pro Pencil** at the base of the brow from the front end to the tail end. Apply over the top of the tail end. Blend using **Brush 20**.

PRO TIPS

- For those with dry skin, use moisturizer before applying **Pro Pencil**.
- Can be applied along the lip line to add definition and achieve a clean lip finish.
- Can be used as an eye shadow base.
- Can be used to conceal or for on-the-go touch-ups.
- Warm up on the back of hand before applying.

PRODUCT PAIRINGS

Brow Powder Duo
Brow Wiz®
Brush 20

SHADE BREAKDOWN



CLEAR BROW GEL

UNIVERSAL. ALL-DAY HOLD.

PRICE \$22 US / \$23 CAD / £29 GBP



A lightweight clear gel that sets brow color and holds brow hair in place

WHY YOU'LL LOVE IT

- Features a lightweight, colorless formula that delivers flexible hold that lasts
- Brush deposits just the right amount of product, so you can apply with control
- Formula holds hairs in place without a stiff feel
- Dries down completely clear without leaving any residue
- Gives brows a fuller appearance with a polished finish
- Soothing chamomile conditions hair while hyaluronic acid hydrates and creates a plumping effect
- Cruelty-free and vegan

HOW TO APPLY

- Brush on using short upward strokes as a finishing topcoat to your brow look. Or, use alone to groom brow hairs and keep them in place.
- The final step to brow application is setting with gel. **Brush Clear Brow Gel** through your finished brow look (5–6 strokes per brow). Apply using an upward motion for an additional lifting effect and added fullness.

PRO TIPS

- Use to tame baby hairs around the hairline.
- Tame the free edge of brow hairs by using the tip of the brush to sweep hairs to the side and set in place.
- To add volume to your brow look, gently sweep brow hairs in the opposite direction with **Clear Brow Gel** to saturate each hair. Then, brush hairs up and to the side to add volume and definition.

PRODUCT PAIRINGS

Perfect Brow Pencil
Brow Wiz®
DIPBROW® Pomade



BROW FREEZE

LIFTED, FEATHERED BROWS THAT LAST

PRICE: **\$23 USD / \$30.50 CAD**

An extreme-hold styling wax that lifts and holds brows in place for a feathered effect.

WHY YOU'LL LOVE IT

- Universal clear wax formula for all skin tones and brow colors
- Provides long-lasting, extreme hold that locks brows in place
- Instantly gives the look of lifted, feathered brows
- Easy-to-use and mess-free application (no water needed)
- Helps to tame unruly and coarse brow hair
- Sets in place without a stiff feel, residue or flaking
- Grips to skin and hair
- Ideal for medium-sparse to full brows
- Luxe, rose gold packaging
- This formula is: Vegan, Cruelty-Free, Water-Based, Alcohol-Free, Paraben-Free, Oil-Free

HOW TO APPLY

- Gently pick up a small amount of product using the spoolie end of **Brush 12**.
- Using the back of the cap, work the product back and forth.
- On clean brows, brush through the brow using upward motions and gently pressing down as you go.
- Continuously brush them in the desired direction as it sets.
- Using the metal ferrule of **Brush 12** (on the angled brush side), use pressing motions to sculpt brow hairs into desired shape and lay the brow hairs down flat.
- Next, fill in sparse areas of the brow using **Brow Powder Duo** and **Brush 7B**.
- For natural-looking brows, apply the lighter shade in the front of the brow and the deeper shade from the arch (middle) to the tail (end).

To maintain optimal appearance and efficacy, cap must remain tightly closed at all times when not in use.

PRO TIPS

- For thicker, untamed brows use a little more product for extra hold
- Can be used to tame unruly hairs around the hair line

SHADE BREAKDOWN

CLEAR



PRODUCT PAIRINGS

Brush 12
Brow Powder Duo
Brush 7B
Pro Pencil



TINTED BROW GEL

SEVEN SHADES. MULTIDIMENSIONAL.

PRICE \$22 US / \$29 CAD / £23 GBP

A lightweight, fully pigmented gel that sets brows with a flexible hold and a tinted finish.

WHY YOU'LL LOVE IT

- Tints brow hair with warm or cool tones
- Lightweight formula delivers flexible, long-lasting, wearable hold
- Dries down to a natural-looking finish
- Shimmery light-reflecting pearls help add dimension and natural-looking fullness to brows
- Unique brush features short fibers for precise, full-pigment application and long fibers for a more natural-looking application
- Cruelty-free and vegan
- Available in 7 shades

HOW TO APPLY

- Choose from 7 shades or mix them together to create your own custom shade. Use **Tinted Brow Gel** as a topcoat over your brow look or wear it by itself for a fast, full-brow look.
- Brush **Tinted Brow Gel** through the brow, starting at the arch and extending to the tail. Finish by filling in the front end of the brow, using minimal product.

PRO TIPS

- Use Tinted Brow Gel to camouflage grey hairs.
- For an ombré effect, apply a darker shade of **Tinted Brow Gel** from arch to tail and a lighter shade through the front of the brow.
- If you have ombré or multicolored hair, add a layer of **Tinted Brow Gel** in a warm or cool shade to add more dimension to your brow look.
- Layer **Tinted Brow Gel** under ABH products for an extra-multidimensional effect.

SHADE BREAKDOWN



PRODUCT PAIRINGS

Brow Powder Duo
Brow Definer
Brow Wiz®



BRUSH 12

DUAL-ENDED FIRM ANGLED BRUSH.

PRICE **\$18 US / \$23 CAD / £18 GBP**

A tapered angled brow brush with firm synthetic fibers, ideal for applying **DIPBROW® Pomade** to the brows with precision.

WHY YOU'LL LOVE IT

- Ideal for filling and defining the brows with emollient-based products (works best with **DIPBROW® Pomade**)
- Easy-to-use brush features a tapered, angled tip with soft, densely packed fibers for creating hairlike strokes
- Features synthetic fibers that don't absorb the product, so it picks up and deposits product smoothly and evenly
- Size of the brush fits perfectly on the brow
- Thin, tapered shape allows for precise application
- Cruelty-free

HOW TO APPLY

- Using the spoolie end, comb the brow hairs upward. Dip the brush end into your favorite cream-based brow product (works best with **DIPBROW® Pomade**) and begin defining the lower arch of the brow. Then, comb brow hairs downward and begin filling in the tail of the brow in the direction of hair's natural growth. Continuously blend throughout application for the most natural-looking effect. Finish by lightly detailing the front of the brow in the direction of hair's natural growth.

PRO TIPS

- Load up **Brush 12** with **DIPBROW® Pomade** and use a stamping motion to create hairlike strokes throughout the brow.
- Load a small amount of **DIPBROW® Pomade** onto **Brush 12**. Using the cap as a palette, push the product into both sides of the tip, ensuring that a minimal amount of product is on the brush.
- Use **Brush 12** to easily create a smoky winged liner look using **Waterproof Crème Color**.
- Use **Brush 12** to apply and diffuse shadow precisely along the lash line.

PRODUCT PAIRINGS

DIPBROW® Pomade

DIPBROW® Gel

Waterproof Crème Color



BRUSH 7B

DUAL-ENDED ANGLED BRUSH.

PRICE \$18 US / \$23 CAD / £18 GBP

A tapered angled brow brush with synthetic fibers, ideal for applying powder and emollient-based products to the brows.

WHY YOU'LL LOVE IT

- Ideal for applying and blending **Brow Powder Duo** for a smooth application
- Soft, synthetic fibers form a superfine edge that lets you fill and define brows with precision
- Has the ideal height and width to perfectly fit into the brow, easily letting you create hairlike strokes
- Lets you quickly define brow arches with powder or emollient-based products while the custom spoolie lets you soften and blend for a natural-looking finish
- Perfect for on-the-go touch-ups
- Cruelty-free

HOW TO APPLY

- Using the custom spoolie, comb brow hairs upward. Dip the brush end into your favorite powder or emollient-based brow product (works best with **Brow Powder Duo**) and begin defining the lower arch of the brow. Then, comb brow hairs downward and begin filling in the tail of the brow in the direction of hair's natural growth. Continuously blend throughout application for the most natural-looking effect. Finish by lightly detailing the front of the brow in the direction of hair's natural growth.

PRO TIPS

- To achieve the look of hair-strokes, saturate **Brush 7B** with **Brow Primer**, pinch the fibers into a clean, sharp angle, dip into **Brow Powder Duo**, and then stamp into brows. This ultra-thin angled brush allows you to create hairlike microstrokes with expert precision.
- Can be used for creating the perfect winged eyeliner.

PRODUCT PAIRINGS

Brow Powder Duo
Brow Pro Palette
DIPBROW® Pomade



BRUSH 20

DUAL-ENDED FLAT DETAIL BRUSH

PRICE **\$18 US / \$23 CAD / £18 GBP**

A flat, square-shaped brow brush with firm synthetic fibers, ideal for defining brows and blending highlighter or concealer.

WHY YOU'LL LOVE IT

- Ultra-thin, densely packed flat fibers make this brush ideal for blending **Highlighting Duo Pencil** or **Pro Pencil** into the brow bone for a softly defined finish
- Flat edge fits perfectly under the brow or along the lash line
- Synthetic fibers pick up and deposit product smoothly and evenly
- Custom spoolie seamlessly blends highlighter or cream-based products around the brow hairs or on delicate areas
- Cruelty-free

HOW TO APPLY

- Featuring flat square-shaped fibers, **Brush 20** is the perfect tool for blending **Highlighting Duo Pencil** or **Pro Pencil** along the brow's upper and lower arches for a defined look.
- After applying **Pro Pencil** or **Highlighting Duo Pencil** to the brow bone, line up the edge of **Brush 20** and blend the product in downward motions. Finish by blending the edges using the spoolie.

PRO TIPS

- Use the remaining highlighter product on the brush, create hairlike strokes through the brow for natural dimension.
- After applying your lip color, use **Brush 20** to blend **Pro Pencil** around the lip line to create a precise lip look.
- **Brush 20** is also great for detailing around the lash line after applying eye shadow.

PRODUCT PAIRINGS

Highlighting Duo Pencil
Pro Pencil
Perfect Brow Pencil



BRUSH 15

MINI ANGLED BRUSH.

PRICE \$18 US / \$23 CAD / £18 GBP

A travel-size, flat angled brow brush with synthetic fibers, ideal for filling and defining brows with powder and emollient-based products.

WHY YOU'LL LOVE IT

- Tapered fibers form a superfine edge that is ideal for filling, outlining and detailing the brows with **Brow Powder Duo** or creating hairlike strokes with **DIPBROW® Pomade**
- Synthetic fibers pick up and deposit product smoothly and evenly
- Perfect compact size for on-the-go application and fits in any makeup bag or purse
- Cruelty-free

HOW TO APPLY

- **Dip Brush 15** into your favorite powder or emollient-based brow product (works best with **Brow Powder Duo** and **DIPBROW® Pomade**) and begin defining the lower arch of the brow. Then, fill in the tail end, moving from the arch to tail. Finish by lightly detailing the front of the brow in the direction of hair's natural growth.

PRO TIPS

- Use **Brush 15** to create hairlike strokes by lightly stamping product into sparse areas of the brow.
- Use **Brush 15** to perfect a winged liner look with expert detail.

PRODUCT PAIRINGS

Brow Powder Duo
DIPBROW® Pomade
Waterproof Crème Color



BRUSH 14

DUAL-ENDED FIRM DETAIL BRUSH.

PRICE **\$18 US / \$23 CAD / £22 GBP**

A tapered angled brow brush with firm, natural fibers, ideal for filling and detailing the brows with powder and emollient-based products.

WHY YOU'LL LOVE IT

- Perfect size to fit within the height and width of the brow
- Tapered angle shape and natural fibers make this brush ideal for applying **DIPBROW® Pomade** with precision to create hairlike strokes
- Firmness of the brush fibers lets you quickly fill in brows with ease
- Can be used to apply both powder and emollient-based products
- Cruelty-free

HOW TO APPLY

- Use the custom spoolie end to comb brow hairs upward. Dip the brush end into your favorite emollient-based brow product (works best with **DIPBROW® Pomade**) and begin defining the lower arch of the brow. Then, comb brow hairs downward and begin filling in the tail of the brow in the direction of hair's natural growth. Continuously blend throughout application for the most natural-looking effect. Finish by lightly detailing the front of the brow in the direction of hair's natural growth.

PRO TIPS

- Use **Brush 14** to create hairlike strokes by lightly stamping product into sparse areas of the brow.
- Use **Brush 14** to create a smudged eyeliner look by diffusing eye shadow and **Waterproof Crème Color** together along the lash line.

PRODUCT PAIRINGS

DIPBROW® Pomade

DIPBROW® Gel

Waterproof Crème Color



PRECISION TWEEZERS

GROOM + MAINTAIN THE PERFECT BROW SHAPE.

PRICE \$28 US / \$36 CAD / £27 GBP

High-quality, slant-tip, stainless-steel tweezers handcrafted in Italy for salon-quality brow grooming.

WHY YOU'LL LOVE IT

- Precise tip is designed to perfectly grab and pull out hairs by the root and remove even the shortest of brow hairs
- Tapered blade with a slanted tip provides for expert hair removal
- Perfect tension maintains bounce-back for control
- Includes a protective rubber cap for safe storage and to protect tweezer blade when not in use
- Durable stainless-steel blade stays sharp
- If properly stored, the tweezers are designed to perform as new, every time
- Sharp enough to isolate one hair, yet gentle enough to not scratch or cut the skin
- Cruelty-free

HOW TO USE

- Remove hairs in the direction that they grow naturally.

PRO TIPS

- Use one drop of **Hydrating Oil** to prep skin for tweezing and to help ensure safer removal of hair.
- Pull out the hair in the direction of natural growth to ensure proper removal of hair without leaving gaps in the brow.
- Use **Pro Pencil** to highlight the area you want to tweeze to avoid over-tweezing.

PRODUCT PAIRINGS

Stencils
Hydrating Oil
Pro Pencil



SCISSORS

GROOM + MAINTAIN THE PERFECT BROW SHAPE.

PRICE \$22.50 US / \$29 CAD / £20 GBP

High-quality, carbon-steel scissors that are handcrafted in Italy and feature ultra-thin blades for salon-quality brow grooming.

WHY YOU'LL LOVE IT

- Straight blade allows you to trim brow hairs in a precise, straight line for pro-quality grooming
- Durable carbon-steel blades stay sharp and won't dull
- Features coated grips for control
- Tip of the blade is microscopically rounded and designed to not cut the skin
- Ideal size for precise grooming and maximum control
- Cruelty-free

HOW TO USE

- Using the spoolie end of any Anastasia Beverly Hills brow brush, comb brow hairs upward. Then, using light pressure, place your index finger on top of the brow to reveal the hairs that need to be trimmed (this helps ensure that you don't over-trim). Using the **Scissors**, trim the brow hairs exposed above your finger.

PRO TIPS

- As an alternative to tweezing the brow hair, trim the hair to maintain ideal brow shape and avoid unwanted sparse areas.
- Trim brow hairs in small increments to ensure that you do not over-trim. Keep in mind that hairs will appear shorter than you may expect.

PRODUCT PAIRINGS

False Lashes
Stencils
Tweezers



SHARPENER

MAINTAIN PRECISION. KIT-FRIENDLY.

PRICE **\$6 US / \$8 CAD / £6 GBP**

A three-in-one sharpener featuring two stainless steel, rust-proof blades for precise sharpening.

WHY YOU'LL LOVE IT

- Sharpens three different pencil sizes
- Included adaptor insert works with standard-size pencils
- Kit-friendly and the ideal size for travel
- Features two stainless steel blades that won't dull or rust
- Enclosed case catches the pencil shavings for a mess-free makeup bag
- Removable lid and base allow for easy disposal of pencil shavings
- Includes a detachable pick for removal of wax from hard-to-reach areas
- Cruelty-free

HOW TO USE

- Determine your pencil's size and adjust the **Sharpener** to match.
Insert the pencil and twist clockwise until desired results are achieved.

PRO TIPS

- Remove the adaptor insert to switch out the sharpener sizes.

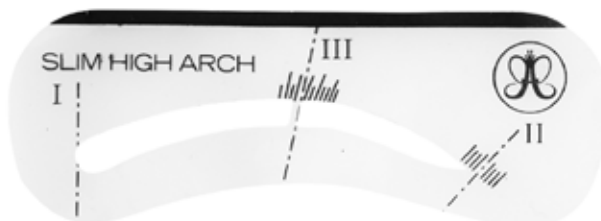
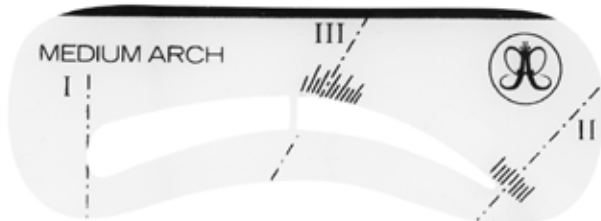
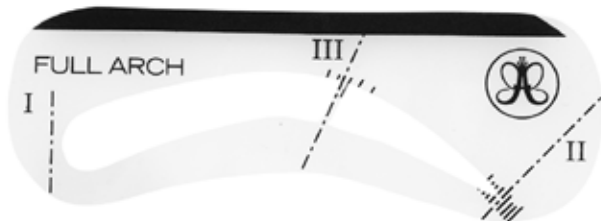
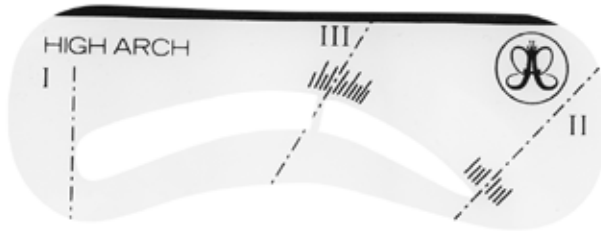
PRODUCT PAIRINGS

Perfect Brow Pencil
Brow Primer
Highlighting Duo Pencil

STENCILS

PERFECT BROW SHAPE. EVERY TIME.

PRICE \$20 US / \$26 CAD / £21 GBP



Based on Anastasia's patented **Golden Ratio® Eyebrow Shaping Method**, this set of patented brow stencils features 5 shapes for achieving perfectly balanced, symmetrical brows.

WHY YOU'LL LOVE IT

- Choose from 5 **Stencil** shapes to find the right shape for your brow look. Immediately takes the guesswork out of finding your perfectly balanced brow and expertly enhances and perfects brow shape
- Includes 3 markings that align with the 3 points of the **Golden Ratio® Method**
- Straight black bar on the top helps you keep the **Stencil** parallel during application
- Flexible plastic hugs the brow bone for easy use during application
- Cruelty-free

HOW TO APPLY

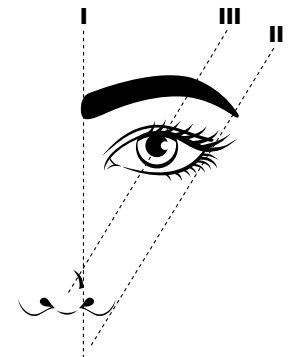
- Using the **Golden Ratio® Method**, mark the three points on the brow: the front of the brow, the end of the tail, and the highest point of the arch. Use these three points as a guide for choosing the right **Stencil** shape for your brow's natural features. Apply **Brow Primer** to the brow. Then, line up the **Stencil** with the three points, making sure the black bar is parallel to the ground. Using **Brush 7B**, sweep **Brow Powder Duo** inside the tail end of the **Stencil** and work the product through the arch toward the beginning of the brow. Once filled, remove the **Stencil** and fill in the brow where the stabilizer was placed. Using the spoolie end, blend the product throughout the brow to create a seamless finish.

PRODUCT PAIRINGS

Brow Powder Duo
Brow Primer
Tweezers

PRO TIPS

- To select your ideal **Stencil** shape, first mark the three points of the **Golden Ratio®** on your brow. Then, hold each **Stencil** up to your brow, aligning the **Stencil**'s guide marks with the three points on your brow to find your match.
- Make sure the **Stencil** you select fits your brow length, from Point **I** to Point **II**. Choose the **Stencil** that allows the most of your natural brow hair through the cutout, without leaving too much exposed skin.
- Use the flat side with the black bar as a guide to create a winged eyeliner look.
- For at-home brow shaping, apply **Brow Powder Duo** to the brow using the **Stencil**, and tweeze the brow hairs that grow outside the **Stencil** shape.



GOLDEN RATIO®

MELT-PROOF BROW KIT

SMUDGE-RESISTANT, WATERPROOF BROWS THAT LAST.

PRICE **\$30 US / \$39 CAD / £34 GBP**



Create perfectly defined, full brows every time with this go-to brow set: a full-size **DIPBROW® Pomade**, a full-size **DIPBROW® Gel** and **Brush 12**.

WHY YOU'LL LOVE IT

- Use **DIPBROW® Pomade**'s full-pigment, waterproof formula to fill in and detail brows.
 - Long-wearing and smudge-resistant
 - Mimics hairlike texture, making it ideal for creating or adding the look of volume
 - Allows for versatility in application—from bold outlining to fine hairlike strokes
 - Allows time for blending before drying to a matte finish
- Use **DIPBROW® Gel**'s highly pigmented, long-lasting, waterproof formula to create the look of volume, natural dimension and fullness to brows.
 - Easy-to-apply formula fills, details and adds volume to brows
 - Creates the appearance of natural dimension and fullness
 - Sets to a natural-looking matte finish that stays in place
 - Lasts up to 12 hours
- **Brush 12**'s tapered angled shape and firm synthetic fibers make it ideal for applying **DIPBROW® Pomade** and **DIPBROW® Gel** to brows with precision.
 - Densely packed fibers pick up and deposit product smoothly and evenly, allowing you to create hairlike strokes with ease
 - Custom spoolie end blends the product for a flawless finish
- Choose from 5 different shades
- Cruelty-free

HOW TO APPLY

- Start by applying **DIPBROW® Gel** at the arch, working toward the tail in the direction of hair's natural growth. Then, with remaining product on the brush, apply through the front of the brow. Let set for 20 seconds. Load up **Brush 12** with **DIPBROW® Pomade** and create hairlike strokes. Leave space in between strokes for a natural brow look. You can also outline the shape for more definition. Blend as you go using the spoolie end of **Brush 12** for a natural-looking finish.

PRO TIPS

- Before applying **DIPBROW® Gel**, wipe off the tip on a clean piece of tissue.
- Load up **Brush 12** with **DIPBROW® Pomade** and work off the cap using a side-to-side motion. This gives the brush tip a clean, sharp angle for creating hairlike strokes with the perfect amount of product.

SHADE BREAKDOWN



PRODUCT PAIRINGS

Clear Brow Gel
Brow Wiz®
Pro Pencil

BEST BROWS EVER KIT

GET SET WITH YOUR BEST BROWS YET.

PRICE \$30 US / \$39 CAD / £34 GBP



Create natural-looking polished brows every time with this go-to brow set: a travel-size **DIPBROW® Gel**, a full-size **Brow Wiz®** and a travel-size **Clear Brow Gel**.

WHY YOU'LL LOVE IT

- Use **DIPBROW® Gel**'s highly pigmented, long-lasting, waterproof formula to create the look of volume, natural dimension and fullness to brows.
 - Easy-to-apply formula fills, details and adds volume to brows
 - Creates the appearance of natural dimension and fullness
 - Sets to a natural-looking matte finish that stays in place
 - Lasts up to 12 hours
 - **Brow Wiz®**, an ultra-slim, fine-tipped, retractable pencil, is perfect for outlining and adding precise detail to the brows.
 - Fine-tipped pencil mimics the look of brow hair with detail and precision
 - Formula features the perfect blend of wax and color that delivers high payoff
 - Easily adds hairlike texture to brows
 - Includes a custom spoolie brush so you can blend for a natural-looking finish
 - With a lightweight, colorless formula, **Clear Brow Gel** sets brow color and holds hair in place for a clean, polished look that lasts.
 - The brush deposits just the right amount of product, so you can apply with control
 - Formula holds hairs in place without a stiff feel
 - Dries down completely clear without leaving any residue
 - Gives brows a fuller appearance with a polished finish
- Choose from 5 different shades
 - Cruelty-free

SHADE BREAKDOWN



TAUPE

SOFT BROWN

MEDIUM BROWN

DARK BROWN

EBONY

HOW TO APPLY

- Start by applying **DIPBROW® Gel** at the arch, working toward the tail in the direction of hair's natural growth. Then, with remaining product on the brush, apply through the front of the brow. Let set for 20 seconds. Detail and perfect the brow by applying hairlike strokes with **Brow Wiz®**. Leave space in between strokes for a natural brow look. You can also outline the shape for more definition. Apply **Clear Brow Gel** to hold brow hairs in place and create a full-feathered finish. Start at the base of the brow and brush upward.

PRO TIPS

- Before applying **DIPBROW® Gel**, wipe off the tip on a clean piece of tissue.

PRODUCT PAIRINGS

Brush 20
Tinted Brow Gel
Pro Pencil



OMBRÉ BROW KIT

THREE MUST-HAVE BROW PRODUCTS FOR THE PERFECT OMBRÉ.

PRICE \$30 US / \$39 CAD / £34 GBP

Effortlessly create the perfect ombré brow every time with this go-to brow set: a full-size **Brow Powder Duo**, **Brush 7B** and a travel-size **Clear Brow Gel**.

WHY YOU'LL LOVE IT

- **Brow Powder Duo** is a two-shade brow powder compact that allows you to perfect the ombré brow technique and give brows a naturally textured look.
 - Use the two shades to create an ombré brow look or to customize your own brow shade
 - Finely milled formula delivers buildable intensity and seamless blending
 - Smooth, velvety texture allows the product to adhere to the skin with ease
 - Includes a mirror for on-the-go touch-ups
- With a tapered angled shape and synthetic fibers, **Brush 7B** is ideal for applying and blending **Brow Powder Duo** to brows for a smooth application.
 - Soft fibers form a superfine edge that lets you create precise hairlike strokes or easily sweep color through the brow
 - Custom spoolie end evenly blends product through the brow for a soft, natural-looking finish
- With a lightweight, colorless formula, **Clear Brow Gel** sets brow color and holds hair in place for a clean, polished look that lasts.
 - The brush deposits just the right amount of product, so you can apply with control
 - Formula holds hairs in place without a stiff feel
 - Dries down completely clear without leaving any residue
 - Gives brows a fuller appearance with a polished finish
- Choose from 5 different shades
- Cruelty-free and vegan

SHADE BREAKDOWN



TAUPE



SOFT BROWN



MEDIUM BROWN



DARK BROWN



EBONY

HOW TO APPLY

- Load up **Brush 7B** with the lighter shade of **Brow Powder Duo** and apply to the front of the brow, working toward the arch. Then, load up **Brush 7B** with the deeper shade of **Brow Powder Duo** and apply to the arch, working toward the tail in the direction of hair's natural growth. Apply **Clear Brow Gel** to hold brow hairs in place and create a full-feathered finish. Start at the base of the brow and brush upward.

PRO TIPS

- You can mix the two shades of **Brow Powder Duo** together to create a custom shade.

PRODUCT PAIRINGS

Brow Primer

Stencils

Highlighting Duo Pencil

BETTER TOGETHER BROW KIT

2 CAN'T-LIVE-WITHOUT BROW PRODUCTS TOGETHER IN 1 KIT.

PRICE \$24 US / \$32 CAD / £25 GBP



A limited-edition kit featuring 2 can't-live-without Anastasia Beverly Hills brow products: **Brow Wiz®** and **Mini Clear Brow Gel**.

WHY YOU'LL LOVE IT

Brow Wiz®

- The perfect tool for outlining brows and adding precise detail
- This fine-tipped pencil mimics the look of brow hair with detail and precision
- Formula features the perfect blend of wax and color that delivers high payoff
- Includes a custom spoolie brush so you can blend for a natural-looking finish

Mini Clear Brow Gel

- Lightweight, colorless formula delivers a flexible hold that lasts
 - Brush deposits just the right amount of product, so you can apply with control
 - Formula sets your brow look and holds hairs in place without a stiff feel
 - Dries down completely clear without leaving any residue
 - Gives brows a fuller appearance with a polished finish
- Choose from 5 different shades of **Brow Wiz®**
 - Cruelty-free and vegan

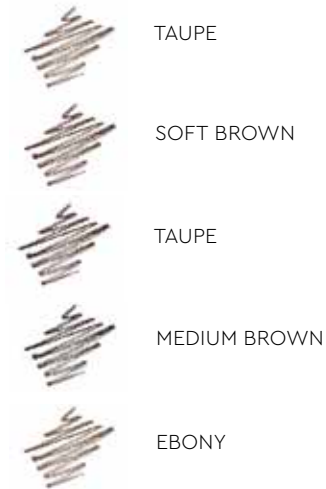
HOW TO APPLY

- Begin by outlining the under arch of the brow with **Brow Wiz®**, moving toward the tail end. Blend using the spoolie. Outline the upper arch and blend using the spoolie. To add detail and dimension, add hairlike strokes to the front of the brow. With the tip of the pencil, lightly sketch in the same direction as hair's natural growth. Use this technique on sparse areas throughout the brow and blend using the spoolie for a natural finish. Remember that all ABH products are highly pigmented, so little pressure is required when applying.
- Finish your brow look by setting with Mini Clear Brow Gel. Brush through your brow look (5-6 strokes per brow) using an upward motion for a lifting effect and added fullness.

PRODUCT PAIRINGS

Pro Pencil
DIPBROW® Pomade
Tweezers

SHADE BREAKDOWN



PRO TIPS

- To achieve the hair-stroke technique, hold **Brow Wiz®** at a slant, lightly place the tip of the pencil onto the brow area, apply pressure at the bottom and then flick your wrist. This creates a follicle effect at the base.
- For a quick application, first outline the shape of the brow (top and bottom) with **Brow Wiz®**, then blend the product through the brow using the spoolie. Warm up the fine-tipped pencil on the back of your hand; this allows for a creamy application. Use the hair-stroke technique to complete the brow look.
- To add volume to any brow look, give brows a quick application of **Mini Clear Brow Gel**. The colorless formula can also be worn alone for a more natural effect.

INSTA-BROWS KIT

THE PERFECT DUO FOR INSTA-WORTHY BROWS.

PRICE \$25 USD / \$33 CAN / £27 GBP

A go-to kit combining **Brow Definer** & **Clear Brow Gel** to create fuller looking, defined brows.

WHY YOU'LL LOVE IT

BROW DEFINER

- Triangular tipped **Brow Definer** showcases three different-sized edges for multifunctional use and versatility in application
- Use the flat side for shading and outlining the brows. Use the medium side to fill and define. Use the fine tip to create hairlike detail.
- Formula features the perfect balance of wax and pigment for easy application (without skipping) and blending
- Soft, custom spoolie specifically designed for blending **Brow Definer's** formula into brow hairs for a natural-looking finish

MINI CLEAR BROW GEL

- With a lightweight, colorless formula, **Mini Clear Brow Gel** sets brow color and holds hair in place for a clean, polished look that lasts.
- Formula holds hairs in place without a stiff feel
- Dries down completely clear without leaving any residue
- Gives brows a fuller appearance with a polished finish
- Paraben and cruelty-free

HOW TO APPLY

Start by outlining the shape of the brow using **Brow Definer**. Using **Brow Definer**, fill in the brow using the flat side and use the fine-tip to create hair-like stroke. Blend as-you-go using the spoolie end of **Brow Definer** for a natural look. Brush **Mini Clear Brow Gel** through the brow in short, upward strokes.

PRO TIPS

- Little pressure is needed when applying
- Twist out 2-3 millimeters of **Brow Definer** for the perfect amount of product and maximum control
- Keep **Brow Definer** sharp by lightly swiping the tip side-to-side on a piece of paper
- Add more definition from the arch to tail for an ombre effect

SHADE BREAKDOWN



TAUPE

For Blonde hair with cool/ash undertones



SOFT BROWN

For Light Brown hair with warm/cool under-



MEDIUM BROWN

For Medium Brown hair with cool/ash undertones



DARK BROWN

For Dark Brown hair with a warm undertone



EBONY

For Black hair with a warm undertone

PRODUCT PAIRINGS

Brow Pen
Pro Pencil
Brush 20



PERFECT YOUR BROW KIT

THE PERFECT DUO FOR NATURALLY DETAILED BROWS.

PRICE \$25 USD / \$33 CAN / £27 GBP

A go-to kit combining essentials **Mini Dipbrow Gel** & **Brow Wiz**® to create natural looking, detailed brows.

WHY YOU'LL LOVE IT

- Use **Mini DIPBROW**® Gel's highly pigmented, long-lasting, waterproof formula to create the look of volume, natural dimension and fullness to brows.
 - Easy-to-apply formula fills, details and adds volume to brows
 - Creates the appearance of natural dimension and fullness
 - Sets to a natural-looking matte finish that stays in place
 - Lasts up to 12 hours
- **Brow Wiz**®, an ultra-slim, fine-tipped, retractable pencil, is perfect for outlining and adding precise detail to the brows.
 - Fine-tipped pencil mimics the look of brow hair with detail and precision
 - Formula features the perfect blend of wax and color that delivers high payoff
 - Easily adds hairlike texture to brows
 - Includes a custom spoolie brush so you can blend for a natural looking finish
- Choose from 5 different shades
- Paraben and cruelty-free

HOW TO APPLY

Before applying **DIPBROW**® Gel, wipe off excess product from applicator. Start by applying **Mini DIPBROW**® Gel at the arch, working towards the tail in the direction of hair's natural growth. Then, with remaining product on the brush, apply through the front of the brow. Let set for 20 seconds. Detail and perfect the brow by applying hairlike strokes with **Brow Wiz**®. Leave space in between strokes for a natural brow look. Outline the shape for added definition.

PRO TIPS

- Little pressure is needed when applying
- Choose a shade that is closest to your natural brow hair color
- Twist out 2-3 millimeters of **Brow Wiz**® for the perfect amount of product and maximum control
- Apply **Mini DIPBROW**® Gel with Brush 12 to create hair-like strokes

SHADE BREAKDOWN



TAUPE
For Blonde hair with cool/ash undertones



SOFT BROWN
For Light Brown hair with warm/cool under-



MEDIUM BROWN
For Medium Brown hair with cool/ash undertones



DARK BROWN
For Dark Brown hair with a warm undertone



EBONY
For Black hair with a warm undertone



FACE

CONTOUR & HIGHLIGHT STICKS

3 CONTOUR SHADES. 1 HIGHLIGHT SHADE. MULTIPURPOSE COMPLEXION PERFECTORS.

PRICE \$23 US / \$30 CAD / £25 GBP

Full-pigment contouring and highlighting cream sticks.

WHY YOU'LL LOVE IT

- Offers buildable coverage you can customize from light to full
- Easy-to-apply formula
- Serves as a multitasking complexion perfecter for concealing, highlighting and contouring
- Shade range complements multiple skin tones
- Ideal for oily and combination skin types
- Sleek component makes it ideal for on-the-go touch-ups
- Cruelty-free and vegan

HOW TO APPLY

- Prep the complexion with moisturizer prior to applying the **Contour & Highlight Sticks** for light coverage with a natural finish.
- Use shade **Banana** to highlight and accentuate features. Apply directly to the upper cheek plane, center of the forehead, bridge and tip of the nose, upper brow bone, inner corner of the eyes, above the jawline, Cupid's bow, and/or chin and blend the edges.
- To find your shade in contour, swatch on the inside of the wrist. Choose the shade that complements your undertone. Blend out using **A30 Pro Brush** or a makeup sponge.
- Use shades **Shadow**, **Fawn** or **Mink** to minimize features. Apply directly to the hollows of the cheek, hairline, jawline, sides of the nose, crease of the eyes, and/or neck and blend the edges.

PRO TIPS

- **Banana** is a pale yellow that can be used to highlight and/or color correct. The yellow undertone helps to brighten most skin tones. For highlight, apply in areas you want to accentuate and bring forward.
- Apply the **Contour Sticks** to the contours of the face to minimize features and sculpt. **Shadow** is a cool contour shade for fair skin tones. **Fawn** is a cool contour shade for light to medium skin tones. **Mink** is a cool contour shade for medium to tan skin tones.
- For spot-concealing, work directly off your **Contour** or **Highlight Stick** with a flat, synthetic concealer brush and apply to areas where coverage is needed.
- For color correcting, use a Contour or Highlight shade with a peach undertone.

SHADE BREAKDOWN



PRODUCT PAIRINGS

Luminous Foundation
Contour Powder Kit
Loose Setting Powder



CONTOUR POWDER KIT

SIX SHADES. SCULPT & BRIGHTEN.

PRICE \$40 US / \$52 CAD / £42 GBP

An all-in-one contour kit containing 3 highlighter shades and 3 contour shades of Anastasia Beverly Hills' pressed, buildable powder formula.

WHY YOU'LL LOVE IT

- 3 contour shades for defining, sculpting and bronzing skin
- 3 highlighter shades for lifting, brightening and color correcting skin
- Finely milled powder formula provides buildable coverage and seamless blendability
- Includes both matte and shimmer highlighter shades to create multidimensional effects
- Ideal for pro kits and is travel friendly
- Can be used on the face, eyes and body
- Cruelty-free and vegan

HOW TO APPLY

- Apply highlight to the high points of the face to accentuate and bring features forward.
- Apply contour to the hollows of the face to sculpt features and add dimension.

PRO TIPS

- Mix shades together to create your own custom highlighter or contour tones for face, eyes and body.
- For a more precise application (especially for contouring around the nose), apply using a small blending brush, such as **A10 Pro Brush**.
- For contouring larger areas, apply using a larger blending brush, such as **A23 Pro Brush**.
- Mix shades **Banana** and **Vanilla** to create a 'peach' color corrector to use on the under-eye area.

SHADE BREAKDOWN

LIGHT TO MEDIUM



VANILLA



BANANA



SAND



JAVA



FAWN



HAVANA

PRODUCT PAIRINGS

Luminous Foundation
Dewy Set Setting Spray
A23 Pro Brush

SUN DIPPED GLOW KIT

FOUR SHADES. INTENSE LUMINOSITY.

PRICE \$40 US / \$52 CAD / £41 GBP



A must-have glow kit containing 4 shades of highlighting powder with metallic warm-bronze hues and intense luminosity.

WHY YOU'LL LOVE IT

- Features a lightweight, refined formula with buildable coverage and a metallic-lustre finish
- Neutral shade range is ideal for any skin tone
- Can be used to highlight anywhere on the face, eyes, lips and body
- Can be paired together to create multidimensional glow
- Can be layered over liquid, cream and powder products
- Cruelty-free and vegan

HOW TO APPLY

- Layer shades together or wear separately on the face, eyes, lips and body. For a natural-looking glow, tap **A23 Pro Brush** on the powder and then sweep over the high points of the face. For an intense glow, gently push the fibers of **A23 Pro Brush** into the powder and use a stippling motion to apply to the high points of the face (including the tops of the cheeks, bridge and tip of the nose, Cupid's bow, chin, inner corners of the eyes and brow bone).
- Use the light shades (**Summer** and **Moonstone**) on the highest points of the face to sculpt.
- Apply the rosy-taupe shade (**Tourmaline**) to the apples of the cheeks for a sun-kissed touch of color.
- The deepest shade (**Bronzed**) adds warmth and shape to the perimeter of the face, nose and cheeks.
- Can be applied wet or dry.

PRODUCT PAIRINGS

Liquid Glow
Powder Bronzer
Dewy Set Setting Spray

SHADE BREAKDOWN



BRONZED



TOURMALINE



MOONSTONE



SUMMER

PRO TIPS

- For maximum reflect and intense color, pair these shades with **Dewy Set Setting Spray**.
- Layer multiple shades together on the high points of the face for a multidimensional highlight.
- Layer these shades over **Liquid Glow** for a high-impact sheen.
- Mix these shades with **Hydrating Oil** for an all-over body glow.
- Apply these shades on top of **Liquid Lipstick** or **Matte Lipstick** for a metallic lip effect.
- Apply these shades over **Darkside Waterproof Gel Liner** or **Jet Waterproof Crème Color** for a duo chrome finish.
- For precise placement, use a small blending brush like **A10 Pro Brush** to create a high-impact glow.



MOONCHILD GLOW KIT

SIX SHADES. HOLOGRAPHIC LUMINOSITY.

PRICE **\$40 US / \$52 CAD / £41 GBP**

A first-of-its-kind glow kit containing 6 shades of highlighting powder with holographic frosted-pastel hues and pearlescent luminosity.

WHY YOU'LL LOVE IT

- Features a lightweight, refined formula with buildable coverage and a metallic-lustre finish
- 6 never-before-seen frosted-pastel metallic highlighter shades in 1 palette
- Can be used to highlight anywhere on the face, body, eyes and brows. Only shades **Blue Ice**, **Lucky Clover** and **Pink Heart** are safe for use on the lips.
- Each shade adds unique color and dimension to any look
- Can be layered over liquid, cream or powder products
- Cruelty-free and vegan

HOW TO APPLY

- Layer shades together or wear separately on the face, eyes, lips and body. For a natural-looking glow, tap **A23 Pro Brush** on the powder and then sweep over the high points of the face. For an intense glow, gently push the bristles of **A23 Pro Brush** into the powder and use a stippling motion to apply to the high points of the face (including the tops of the cheeks, bridge and tip of the nose, Cupid's bow, chin, inner corners of the eyes and brow bone).
- Can be applied wet or dry.

PRO TIPS

- For maximum reflect and intense color, pair these shades with **Dewy Set Setting Spray**.
- Layer multiple shades together on the high points of the face for a multidimensional highlight.
- Layer these shades over **Liquid Glow** for a high-impact sheen.
- Mix these shades with **Hydrating Oil** for an all-over body glow.
- Apply these shades on top of **Liquid Lipstick** or **Matte Lipstick** for a metallic lip effect.
- Apply these shades over **Darkside Waterproof Gel Liner** or **Jet Waterproof Crème Color** for a duo chrome finish.
- For precise placement, use a small blending brush like **A10 Pro Brush** to create a high-impact glow.

SHADE BREAKDOWN



BLUE ICE

STAR

PURPLE HORSESHOE

PINK HEART

LUCKY CLOVER

BLUE MOON

PRODUCT PAIRINGS

Liquid Glow
Dewy Set Setting Spray
A23 Pro Brush

SUGAR GLOW KIT

FOUR SHADES. INTENSE LUMINOSITY.

PRICE \$40 US / \$52 CAD / £41 GBP

A must-have glow kit containing 4 shades of highlighting powder with metallic pink-toned hues and intense luminosity.

WHY YOU'LL LOVE IT

- Lightweight, refined formula with buildable coverage and a metallic-lustre finish
- Can be used for highlighting the eyes, face and body
- Pink-toned shade range is ideal for any skin tone
- Cruelty-free and vegan

HOW TO APPLY

- Layer shades together or wear separately on the face, eyes, lips and body. For a natural-looking glow, tap **A23 Pro Brush** on the powder and then sweep over the high points of the face. For an intense glow, gently push the bristles of **A23 Pro Brush** into the powder and use a stippling motion to apply to the high points of the face (including the tops of the cheeks, bridge and tip of the nose, Cupid's bow, chin, inner corners of the eyes and brow bone).
- Use the light shades (**Marshmallow** and **Starburst**) on the highest points of the face to sculpt.
- Apply the pink-lilac shade (**Gumdrop**) to the apples of the cheeks for a sun-kissed touch of color.
- The deepest shade (**Butterscotch**) adds warmth and shape to the perimeter of the face, nose and cheeks.

Can be applied wet or dry.

PRO TIPS

- For maximum reflect and intense color, pair these shades with **Dewy Set Setting Spray**.
- Layer multiple shades together on the high points of the face for a multidimensional highlight.
- Layer these shades over **Liquid Glow** for a high-impact sheen.
- Mix these shades with **Hydrating Oil** for an all-over body glow.
- Apply these shades on top of **Liquid Lipstick** or **Matte Lipstick** for a metallic lip effect.
- Apply these shades over **Darkside Waterproof Gel Liner** or **Jet Waterproof Crème Color** for a duo chrome finish.
- For precise placement, use a small blending brush like **A10 Pro Brush** to create a high-impact glow.

SHADE BREAKDOWN



MARSHMALLOW



GUMDROP



STARBURST



BUTTERSCOTCH

PRODUCT PAIRINGS

Liquid Glow
Loose Setting Powder
A23 Pro Brush



NICOLE GUERRIERO GLOW KIT

SIX SHADES. HOLOGRAPHIC LUMINOSITY.

PRICE **\$40 US / \$52 CAD / £41 GBP**



A limited-edition glow kit featuring Nicole Guerriero's 6 go-to metallic powder highlighters for intense luminosity.

WHY YOU'LL LOVE IT

- Contains 6 stunning highlighter shades with a metallic-lustre finish
- Features a lightweight, refined formula with buildable coverage and seamless blendability
- Each wearable shade flatters any skin tone from fair to deep
- Shades can be used for highlighting the eyes, face, lips and body
- Formulated without parabens, gluten and phthalates
- Noncomedogenic, dermatologist tested and clinically tested
- Cruelty-free and vegan

HOW TO APPLY

- Layer shades together or wear separately on the face, eyes, lips and body. For a natural-looking glow, tap **A23 Pro Brush** on the powder and then sweep over the high points of the face. For an intense glow, gently push the fibers of **A23 Pro Brush** into the powder and use a stippling motion to apply to the high points of the face (including the tops of the cheeks, bridge and tip of the nose, Cupid's bow, chin, inner corners of the eyes and brow bone).
- Can be applied wet or dry.

PRO TIPS

- For maximum reflect and intense color payoff, pair these shades with **Dewy Set Setting Spray**.
- For a multidimensional highlight, layer multiple shades together on the high points of the face.
- For a high-impact sheen effect, layer these shades over **Liquid Glow**.

SHADE BREAKDOWN



PRODUCT PAIRINGS

A23 Pro Brush
Dewy Set Setting Spray
Powder Bronzer

LIQUID GLOW

WEIGHTLESS FORMULA. SEAMLESS BLEND. SHADES FOR ALL.

PRICE \$25 US / \$33 CAD / £26 GBP



A weightless liquid highlighter that offers an intense glow with metallic and lustre finishes.

WHY YOU'LL LOVE IT

- Full-pigment liquid formula helps you effortlessly create the look of radiant, dewy skin
- Seamlessly blends into skin
- Dries down to a flawless, natural-looking finish
- Slender packaging is kit friendly and travel ready
- Cruelty-free and vegan
- Available in 7 shades

HOW TO APPLY

- For a natural-looking glow, gently squeeze the tube and dispense 2 pearl-size drops onto the high points of the face. Then, softly blend into the skin using the tool of your choice (your fingertips, a makeup sponge or a round synthetic makeup brush, such as **A6 Pro Brush**). For a more bumped-up look, apply 4 pearl-size drops and blend using a stippling motion.

PRO TIPS

- For a more intense reflect, layer your favorite **Glow Kit** on top of **Liquid Glow**. Use **A23 Pro Brush** to sweep the powder onto the high points of the face.
- For a natural-looking body glow, apply **Liquid Glow** in pearl-sized drops directly onto the décolleté, arms or legs. Then, buff and blend the product into the skin using a dome-shaped **Kabuki Brush**.
- For a more intense all-over body glow, use a mixing plate to load a dome-shaped Kabuki brush with **Liquid Glow**. Then, buff the product onto the décolleté, arms or legs.
- Layer multiple shades together for a multidimensional glow.
- Can be used underneath or on top of Luminous Foundation.
- For an all-over luminous complexion, mix **Liquid Glow** and **Luminous Foundation** together and apply.

SHADE BREAKDOWN



PRODUCT PAIRINGS

Sun Dipped Glow Kit
Hydrating Oil
Contour Powder Kit

HYDRATING OIL

COMPLEXION BOOSTING. NOURISHING HYDRATION.

PRICE \$45 US / \$59 CAD / £51 GBP



A complexion-boosting facial oil that delivers nourishing hydration to the skin.

WHY YOU'LL LOVE IT

- Moisture-binding formula leaves skin feeling supple and nourished
- The nutrient-rich properties of these Mediterranean botanical extracts were Anastasia's inspiration in creating **Hydrating Oil**. This nourishing blend hydrates and provides added benefits to the skin:
 - Jojoba—Helps balance dry and oily areas of the skin
 - Borage Seed—Helps firm, soothe, moisturize and revitalize skin
 - Black Currant—Antioxidant-rich extract that aids in the effects of skin discoloration
 - Rosehip—Hydrating oil that helps improve texture and the appearance of stretch marks
 - Meadowfoam—Helps to soften dry patches on the skin
 - Lovage Leaf—Helps improve skin tone
- Formulated without parabens
- Noncomedogenic, dermatologist tested and clinically tested
- Cruelty-free and vegan

HOW TO APPLY

- For skin care use, apply **Hydrating Oil** after your serum and before your moisturizer. Apply a few drops of **Hydrating Oil** to the face and neck twice daily for more hydrated, supple-looking skin.
- Using the dropper applicator, apply **Hydrating Oil** directly to the skin where needed. Then, buff and blend the formula into the skin using your fingertips or the tool of your choice.

PRO TIPS

- Prep complexion for a smooth makeup application by pressing **Hydrating Oil** into the skin prior to applying foundation for a hydrated, natural-looking finish. Ideal for those with dry skin!
- For a natural-looking sheer finish, mix **Luminous Foundation** and **Hydrating Oil** together and apply.
- Use one drop of **Hydrating Oil** to prep skin for tweezing and to ensure safer removal of hair.
- Add a drop of **Hydrating Oil** to **DIPBROW® Pomade** to refresh the product when needed.

PRODUCT PAIRINGS

Luminous Foundation
Powder Bronzer
Dewy Set Setting Spray



BLUSH TRIO

3 SHADES. ONE COMPACT. VARIETY OF LOOKS.

PRICE **\$30 US / \$35 CAD / £30 GBP**

A trio of full-pigment blush shades in a finely milled, blendable formula.

WHY YOU'LL LOVE IT

- Finely milled formula delivers seamless blending
- Allows for versatile application with buildable intensity
- Easy to apply and lasts all day
- Use the compact's 3 shades separately or mix them together to create a variety of looks
- Travel-friendly compact includes a large mirror for on-the-go touch-ups
- Cruelty-free and vegan
- Available in 5 color ranges with multiple finishes

HOW TO APPLY

- For a soft wash of color, apply **Blush Trio** with a light sweeping motion. For a more saturated color look, apply **Blush Trio** using a stippling motion. Create your own custom blush shades by mixing 2-3 shades together.

PRO TIPS

- Apply these shades above your contour application to enhance and sculpt the cheekbone.
- Apply these shades to the upper cheek plane to lift and add volume to the complexion.
- Apply these shades on the apple of the cheeks to brighten complexion.
- Create a multidimensional cheek look by applying all 3 techniques.

PRODUCT PAIRINGS

Loose Setting Powder
Powder Bronzer
Luminous Foundation

SHADE BREAKDOWN



POWDER BRONZER

SIX SHADES. NATURAL MATTE. SUN-KISSED COLOR.

PRICE \$28 US / \$33 CAD / £29 GBP

A finely milled powder bronzer that provides a natural matte finish with buildable coverage.

WHY YOU'LL LOVE IT

- Finely milled formula has a natural-looking matte finish
- Provides buildable coverage and seamless blending
- Can be layered on top of liquid, cream and powder products
- Can be applied to the face and body to add warmth
- Includes a large mirror for on-the-go touch-ups
- Cruelty-free and vegan
- Available in 6 naturally sun-kissed shades for all skin tones

HOW TO APPLY

- Apply to the cheekbones, temples, perimeter of the forehead, jawline, chin, neck and chest area.
- For a naturally sun-kissed bronze, choose a shade that is 1-2 shades deeper than your skin tone. Using **A19 Pro Brush**, apply in a sweeping motion across the perimeter of the face.
- For an intense bronze, choose a shade that is 2-3 shades deeper than your skin tone. Using **A20 Pro Brush**, apply to the face in a sweeping motion. Blend directionally toward the area you would like to enhance.

PRO TIPS

- For most skin tones, select a shade with a golden or peach undertone that is warmer than your skin tone. If there is a distinctly warm undertone to your skin, choose a shade of bronzer that has a cooler undertone.
- If your face is lighter than the rest of your body, swatch the bronzer shades on the inside of the wrist using your ring finger. If your face is the same shade as the rest of the body, swatch on the top of your hand using your ring finger.
- A large, tapered, natural-fiber brush is ideal for sweeping **Powder Bronzer** across the forehead, cheeks, jawline and body for a seamless, sun-kissed finish.
- A medium, round natural-fiber brush is ideal for applying **Powder Bronzer** with precise placement and payoff.
- Layer 2 shades together to build points of intensity.

SHADE BREAKDOWN



ROSEWOOD



TAWNY



RICH AMBER



CAPPUCCINO



SADDLE



MAHOGANY

PRODUCT PAIRINGS

Blush Trio
Liquid Glow
Sun Dipped Glow Kit

LOOSE GLITTER

HIGH-LEVEL SPARKLE. ENDLESS LOOKS.

PRICE \$15 US / \$20 CAD / £15 GBP



An ultra-reflective metallic loose glitter.

WHY YOU'LL LOVE IT

- High-level sparkle for face, body and hair
- Light reflecting with a multidimensional effect
- Lightweight fine particles
- Buildable intensity
- Dermatologist tested
- Formulated without parabens and gluten
- Vegan and cruelty-free
- Available in 8 shades

HOW TO APPLY

- Apply **Loose Glitter** using **Glitter Adhesive** (sold separately). Using **Glitter Adhesive**'s brush applicator, apply a sheer layer directly onto the skin. Then, load **Loose Glitter** onto a flat synthetic brush and quickly press glitter into the adhesive.
- Or, disperse a small amount of the adhesive and a small amount of the glitter onto a mixing plate or the back of your hand. Dip your synthetic brush into the adhesive and then into the glitter, creating a paste-like texture. Then, press the glitter directly onto desired placement.

PRO TIPS

- Layer on top of your cheek highlighter for added dimension.
- To create a more intense, all-over body shimmer, mix **Loose Glitter** and **Liquid Glow** together and apply.
- To create a sheer body shimmer, mix **Loose Glitter** with **Hydrating Oil**, then apply.
- Be sure to tightly close the cap after use to avoid spillage.

SHADE BREAKDOWN



PRODUCT PAIRINGS

Glitter Adhesive
Moonchild Glow Kit
Dewy Set Setting Spray

GLITTER ADHESIVE

FOR ALL-DAY GLITTER WEAR.

PRICE **\$18 US / \$23 CAD / £19 GBP**



Water-based glitter glue that keeps loose makeup adhered to skin.

WHY YOU'LL LOVE IT

- Adheres loose makeup and holds it in place
- Colorless, lightweight formula with comfortable wearability
- Prevents fallout of loose makeup
- Can be used on the face and body
- Formulated without parabens
- Noncomedogenic and dermatologist tested
- Cruelty-free and vegan

HOW TO APPLY

- Apply **Glitter Adhesive** directly onto the skin before applying loose makeup. Or, press a makeup brush into a small amount of the adhesive before picking up loose makeup.
- Apply **Loose Glitter** (sold separately) with **Glitter Adhesive**. Using **Glitter Adhesive**'s brush applicator, apply a sheer layer directly onto the skin. Then, load Loose Glitter onto a flat synthetic brush and quickly press glitter into the adhesive.

PRO TIPS

- For best results, apply the adhesive in sheer layers.
- To keep brush applicator sanitary, wipe off in between uses.
- Keep lid closed tightly to avoid drying out.

PRODUCT PAIRINGS

Loose Glitter

Brush 18

Eye Shadow Palettes

DEWY SET SETTING SPRAY

FOR A DEWY LOOK THAT LASTS.

PRICE **\$26 US / \$34 CAD / £27 GBP**

A coconut-vanilla-scented setting spray that seamlessly blends products together as it sets makeup—leaving the complexion with a dewy (never oily), radiant finish.

WHY YOU'LL LOVE IT

- Water-based formula goes on weightlessly and leaves skin feeling smooth and refreshed
- Use alone to give skin a healthy-looking glow or to prep skin for a smooth makeup application
- Finishes makeup and keeps it looking dewy with a radiant glow
- Gives the complexion a dewy finish as it helps makeup blend into the skin and not appear powdery
- Can be reapplied throughout the day to refresh the skin without disturbing makeup
- Custom-designed atomizer emits a super-fine gentle mist yet still delivers maximum amount of product, so less pumps are needed
- Features an invigorating coconut-vanilla scent
- Works well for all skin types
- Formulated without of parabens, gluten, alcohol and mineral oil
- Noncomedogenic and dermatologist tested
- Comes in a luxe, glittery bottle. Formula is free of any glitter, sparkle or shimmer. Only packaging features decorative glitter element.
- Cruelty-free and vegan

HOW TO APPLY

- Use **Dewy Set** to prep, fix or finish makeup throughout application.
- Apply to clean skin to prep or after makeup application to finish or refresh the complexion.
- Mist face in a "T" and "X" formation. Keep out of eyes.

PRO TIPS

- **Dewy Set Setting Spray's** refreshing formula is great for dry skin types.
- Mist **Dewy Set Setting Spray** directly onto the upper cheek plane prior to your highlighter application for a more intense payoff.
- Mist your eye shadow brush with **Dewy Set Setting Spray** after dipping into your shadows to create a more intense color payoff.
- Mist your complexion brush with **Dewy Set Setting Spray** before applying foundation to give your look an extra-dewy effect.

PRODUCT PAIRINGS

Luminous Foundation
Glow Kits
Eye Shadow Palettes





LOOSE HIGHLIGHTER

HIGH REFLECT. INTENSE PEARLESCENT SPARKLE.

PRICE \$25 US / \$33 CAD / £25 GBP

A shimmering loose highlighter powder with highly reflective, iridescent pearls that deliver an intense sparkly payoff.

WHY YOU'LL LOVE IT

- The loose powder formula contains more pearls, more sparkle and a higher reflect than a pressed powder formula
- Provides a smooth application that glides onto skin
- Allows for versatile application with customizable levels of intensity
- Use the shades alone or mix together for a custom highlight
- Looks great on all skin tones and types
- Can be used on the eyes, lips, skin, body and hair
- Formulated without parabens and gluten
- Noncomedogenic and dermatologist tested
- Cruelty-free and vegan
- Available in 5 shades

HOW TO APPLY

- A little goes a long way—just a small amount will have you glowing all day long. Lightly pick up Loose Highlighter with **A23 Pro Brush**, apply to the high points of the face, and blend out for a balanced application.
- Can be used wet or dry.

PRO TIPS

- For added intensity, mist brush with **Dewy Set Setting Spray** after dipping into **Loose Highlighter**, then apply directly to the skin.
- For a more sheer highlight look, apply using a fan brush.
- For a more intense, precise application, apply using a small fluffy brush.
- To create a luminous base, mix **Loose Highlighter** into your primer before applying.
- For an all-over body glow, mix **Loose Highlighter** with **Hydrating Oil** or body lotion and apply.

SHADE BREAKDOWN



PRODUCT PAIRINGS

Liquid Glow
Dewy Set Setting Spray
A23 Pro Brush



LUMINOUS FOUNDATION

FLAWLESS. INSTANTLY.

PRICE **\$38 US / \$49 CAD / £43 GBP**

A medium-coverage liquid foundation with a luminous, natural finish.

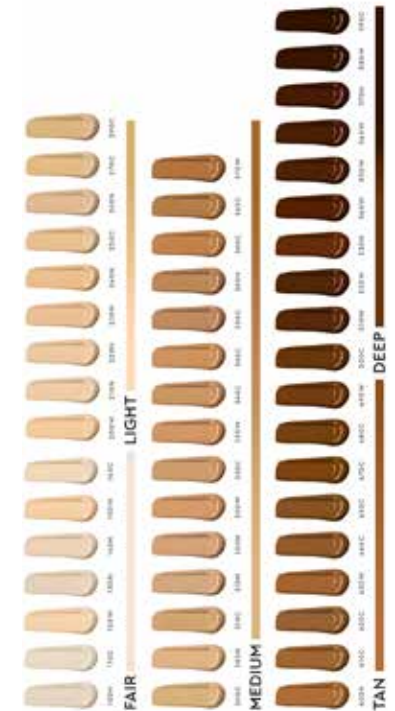
WHY YOU'LL LOVE IT

- Water-resistant, long-wearing formula with medium coverage
- Gives the complexion a fresh, radiant look with a lightweight, second-skin feeling
- Masks discoloration, unevenness and blotchiness while giving the skin a natural, healthy-looking radiance
- No-flashback formula creates a soft-focus effect and does not oxidize
- Sleek, modern component with a custom hygienic pump dispenses just the right amount of product
- Suitable for sensitive skin
- Formulated without gluten, parabens, alcohol, oil, mineral oil and talc
- Noncomedogenic, dermatologist tested, ophthalmologist tested and clinically tested
- Cruelty-free and vegan
- Available in 5 shade categories (**Fair, Light, Medium, Tan, Deep**) and 3 undertones (**Cool, Warm, Neutral**)
- Available in 50 shades

HOW TO APPLY

- Select the shade that most closely complements your skin tone and undertone. First, choose from the shade category (**Fair, Light, Medium, Tan, Deep**) that best suits you. Then, choose the shade in that category that most closely matches your skin tone. To help you choose, select the shade that matches your undertone (**C = Cool, W = Warm, N = Neutral**). If your skin has more of a pink, red or bluish tone to it, then you are a **Cool** undertone. If your skin has more of a yellow, peach or golden tone to it, then you are a **Warm** undertone. If your skin has a mix of both cool and warm tones, then you are a **Neutral** undertone.
- Begin by applying **Luminous Foundation** directly to the skin in areas where you would like the most coverage, such as the center of the face, center of the forehead, nose and jawline/chin. Apply and blend out with a firm foundation brush like **A30 Pro Brush**, a makeup sponge or your fingertips.
- Start with the main placements and add additional coverage if needed. Bring down onto the neck area if needed for color continuity.

SHADE BREAKDOWN



PRODUCT PAIRINGS

A30 Pro Brush
Loose Setting Powder
Dewy Set Setting Spray

LOOSE SETTING POWDER

HIGH REFLECT. INTENSE PEARLESCENT SPARKLE.

PRICE \$36 US / \$47 CAD / £39 GBP

An easy-to-use, lightweight loose powder for setting makeup in place.

WHY YOU'LL LOVE IT

- Lightweight, silky loose powder formula is easily blendable and sets makeup with a smooth, flawless matte finish
- Melts into the skin to perfect, brighten and keep makeup set all day
- Delivers a long-wearing effect to makeup
- Powder absorbs oil, minimizes shine and mattifies
- Finely milled, superfine powder blurs the look of fine lines, unevenness and pores
- Formulated without gluten and oil
- Noncomedogenic, dermatologist tested and clinically tested
- Cruelty-free and vegan
- 4 tinted shades for light, medium, tan and deep skin tones, plus 1 universal translucent shade

HOW TO APPLY

- After perfecting the complexion with foundation, set the look with **Loose Setting Powder**. First, tap a small amount of the powder into the lid. Next, saturate the side of a makeup sponge or powder brush with the powder, tap off the excess and then lightly press and roll in areas you want to set. Focus on the T-zone and under-eye area.
- For a natural set, dust powder over the face using a large powder brush.
- For oily skin, use a small powder brush or **A23 Pro Brush** to press powder into the skin in areas that tend to experience excess shine.

PRO TIPS

- Use the translucent shade or a light shade in areas you want to highlight for a brightening effect.
- Apply **Banana** to the apple of the cheek to brighten dullness and neutralize mild redness.
- Use **Golden Orange** to spot correct acne scars and darkness around the nose and mouth on deep skin tones.
- Apply **Deep Peach** to the under-eye area and around the mouth to neutralize the blue from dark circles and discoloration on deeper skin tones.

SHADE BREAKDOWN



PRODUCT PAIRINGS

Luminous Foundation
Dewy Set Setting Spray
Contour Powder Kit



MINI LOOSE SETTING POWDER

LIGHTWEIGHT. SUPERFINE. TRAVEL-SIZE.

PRICE: **\$19 USD / \$25 CAD / £14.5 GBP**

An easy-to-use, lightweight loose powder for setting makeup in place—in a mini, travel-friendly size.

NET WEIGHT

Mini-Size: Net wt. 9 g / 0.32 Oz.

Full-Size: Net wt. 25 g / 0.9 Oz.

WHY YOU'LL LOVE IT

- Lightweight, silky loose powder formula is easily blendable and sets makeup with a smooth, flawless matte finish
- Melts into the skin to perfect, brighten and keep makeup set all day
- Delivers a long-wearing effect to makeup
- Powder absorbs oil, minimizes shine and mattifies
- Finely milled, superfine powder blurs the look of fine lines, unevenness and pores
- Formulated without gluten and oil
- Noncomedogenic, dermatologist tested and clinically tested
- Cruelty-free and vegan
- Available in 1 universal translucent shade

HOW TO APPLY

After perfecting the complexion with foundation, set the look with **Mini Loose Setting Powder**. First, tap a small amount of the powder into the lid. Next, saturate the side of a makeup sponge or powder brush with the powder, tap off the excess and then lightly press and roll in areas you want to set. Focus on the T-zone and under-eye area.

PRO TIPS

- For a natural set, dust powder over the face using a large powder brush.
- For oily skin, use a small powder brush or **A23 Pro Brush** to press powder into the skin in areas that tend to experience excess shine.
- Set your undereye concealer using a 'baking' effect for a smooth, creaseless finish.
- Use to set cream eye shadow

SHADE BREAKDOWN



TRANSLUCENT

PRODUCT PAIRINGS

Luminous Foundation
Dewy Set Setting Spray
Contour Powder Kit





HIGHLIGHTER

AMPLIFY YOUR INNER GLOW

PRICE: **\$34 USD / \$45 CAD**

An illuminating powder for a lit-from-within radiance.

WHY YOU'LL LOVE IT

- Multi-dimensional illuminating powder that achieves the perfect glow
- Ultra-smooth formula with seamless blending and buildable intensity
- Universal shade delivers single-sweep luminosity
- Ultra-reflective powder formula gives the effect of a liquid for lit from within radiance
- Easy-to-apply and can be used on the face, eyes and body
- Design of the press allows for the brush to pick up the perfect amount of product
- Luxe, rose gold compact includes a mirror
- Can be used dry or wet
- This formula is: Vegan, Cruelty-Free, Talc-Free, Paraben-Free and Fragrance-Free

HOW TO APPLY

Gently sweep **A23 Pro Brush** across **Highlighter** to pick up product. Apply **Highlighter** onto all areas you want to accentuate, such as the upper cheekbones, bridge and tip of the nose, cupid's bow and collarbone. For mega-shine, layer for desired intensity.

PRO TIPS

- Wear over bare lips for natural lip color with high shine.
- Apply to the center of the lips for extra volume.
- Pair with **Brow Definer** and **Matte Lipstick** for extra dimension.
- For dry lips, apply **Lip Primer** prior to application.
- For dry lips with flakiness, use a gentle lip exfoliator prior to application.

PRODUCT PAIRINGS

A23 Pro Brush
Dewy Set Setting Spray
Luminous Foundation
Powder Bronzer

SHADE BREAKDOWN



ICED OUT
Icy Gold



SHIMMER BODY OIL

LUXE, LIGHTWEIGHT OIL. SUN-KISSED GLOW.

PRICE \$38 US / \$49 CAD / £39 GBP



A luxe, lightweight body oil that gives skin a sun-kissed glow. Shake well prior to use.

WHY YOU'LL LOVE IT

- Luxurious, lightweight formula goes on smoothly and leaves skin with a touchable, silky-soft feel (never greasy)
- Sparkly glitter reflect illuminates the skin with a golden glow and a subtle shimmer finish
- Features a tropical coconut-vanilla scent
- Emits a super-fine mist that goes on weightlessly
- Infused with a blend of sweet almond oil and jojoba seed oil
- Formulated without of parabens and gluten
- Noncomedogenic and dermatologist tested
- Cruelty-free and vegan

HOW TO APPLY

- Shake well prior to use. Mist oil onto application area and allow to dry on its own or blend into skin until desired level of intensity is achieved.
- Safe for use on the body. Avoid use around the face and eye area.

PRO TIPS

- Allow the formula to completely dry down after application.
- Apply **Shimmer Body Oil** to the high points of the body, such as the collarbone, décolletage and tops of the shoulders. Or, apply all over for a more intense glow.
- For added shimmer and dimension, lightly dust on the **Sun Dipped Glow Kit** shades over your **Shimmer Body Oil** application using **A23 Pro Brush**.

PRODUCT PAIRINGS

Powder Bronzer
Sun Dipped Glow Kit
Liquid Glow



NORVINA® LOOSE GLITTER

GLITTER IN NORVINA FASHION.

PRICE \$15 US / \$20 CAD / £15 GBP

An easy-to-use, lightweight loose powder for setting makeup in place.

WHY YOU'LL LOVE IT

- High-level sparkle for face, body and hair
- Light reflecting with a multidimensional effect
- Lightweight fine particles
- Buildable intensity
- Dermatologist tested
- Formulated without gluten and parabens
- Cruelty-free and vegan
- Available in 10 shades

HOW TO APPLY

- Apply **NORVINA® Loose Glitter** using **Glitter Adhesive** (sold separately). Using **Glitter Adhesive**'s brush applicator, apply a sheer layer directly onto the skin. Then, load **NORVINA® Loose Glitter** onto a flat synthetic brush and quickly press glitter into the adhesive application.
- Or, disperse a small amount of the glitter and the adhesive onto a metal mixing plate or the back of your hand. Dip your synthetic brush into the adhesive and then into the glitter, creating a paste-like texture. Then, press the glitter directly onto desired area.

PRO TIPS

- Layer the glitter on top of your cheek highlighter for added dimension.
- To create a more intense, all-over body shimmer, mix **Norvina® Loose Glitter** with **Liquid Glow**, then apply.
- To create a sheer body shimmer, mix **Norvina® Loose Glitter** with **Hydrating Oil**, then apply.
- Be sure to tightly close the cap after use to avoid spillage.

PRODUCT PAIRINGS

Glitter Adhesive
Moonchild Glow Kit
Dewy Set Setting Spray

SHADE BREAKDOWN



COLOR WAVE



DIMENSION



IN THE MOMENT



TEAM NO SLEEP



RALLY



KEEP PALM



WAVY



DAY 2



FLOWER CHILD



CARNIVAL



ELECTRIC CAKE LINER

LIGHT UP YOUR FESTIVAL LOOKS.

PRICE \$30 US / \$39 CAD / £25 GBP

A trio of water-activated cake liner shades with vivid, opaque color and versatile application.

WHY YOU'LL LOVE IT

- Water-activated, color-intense cake liner goes on like liquid pigment and dries to a long-wearing opaque finish
- Each set includes a trio of bright, vibrant colors
- Perfect for pro-quality face and body art application
- Comes in a stackable festival-colored component
- Formulated without parabens, gluten, phthalates, oil, mineral oil and alcohol
- Dermatologist tested
- Cruelty-free and vegan

HOW TO APPLY

- Add a small amount of desired mixing medium (such as water or **Dewy Set Setting Spray**) to **Electric Cake Liner** to activate.
- Mix using a synthetic brush and apply. Layer as needed.
- Let color dry in place. To lock in color for all-day wear, finish with **Dewy Set Setting Spray**.

PRO TIPS

- Add less mixing medium for more opacity. Add more mixing medium for a sheer wash of color.
- Use a thin tapered angle brush to apply with precision. Use a large flat brush or makeup sponge for larger application.
- Use a wet liner brush to create detailed line work or body art.
- Apply shades alone or mix together to create your own custom colors.
- Allow product to fully dry before storing. Be sure to tightly close the cap.

PRODUCT PAIRINGS

Dewy Set Setting Spray

Brush 3

A2 Pro Brush

SHADE BREAKDOWN

SET 1'



ELECTRIC PINK



ELECTRIC YELLOW



ELECTRIC LIME

SET 2'



ELECTRIC ORANGE



ELECTRIC WHITE



ELECTRIC PURPLE

*All shades are not intended for use around the immediate eye area.



EYES

MODERN RENAISSANCE EYE SHADOW PALETTE

FOURTEEN SHADES. NEUTRALS + POPS OF COLOR. INTENSE COLOR PAYOFF.

PRICE **\$42 US / \$55 CAD / £43 GBP**

An essential eye shadow collection featuring 14 full-pigment shades—from neutral to berry tones in matte and metallic finishes.

WHY YOU'LL LOVE IT

- Full-pigment, easy-to-blend formula delivers high color payoff and buildable intensity
- Contains 14 eye shadow shades, from neutrals to pops of color
- Palette includes 1 satin, 2 metallic and 11 matte finishes
- Includes a dual-ended brush and a large mirror housed inside travel-friendly packaging
- Cruelty-free

HOW TO APPLY

- Little pressure is needed when picking up product.
- Apply light shades to highlight and accentuate features. Apply medium shades to contour and transition color for a blended finish. Apply deeper shades to define and line.
- The included double-ended brush is compact and perfect for on-the-go application. Use the flat end to deposit color, highlight, or pack shadow onto the lid. Use the fluffy end to diffuse and blend.
- All shades can be applied wet or dry to achieve endless looks transitioning from day to night.

PRO TIPS

- For a more intense color payoff, pair the metallic shades with **Dewy Set Setting Spray**.
- Create a gradient smoky eye look using a cool-tone shade for contouring and a warm-tone shade for blending out. The contrast between the warm and cool tones come together to create a high-impact eye look.
- Use any of the bright shades as a cheek color.
- Use the deeper matte shades to define the lash line.
- The highlight shades can be used on the face.

PRODUCT PAIRINGS

Darkside Waterproof Gel Liner
Eye Primer
False Lashes

SHADE BREAKDOWN





SOFT GLAM EYE SHADOW PALETTE

THE ESSENTIAL NEUTRAL PALETTE.

PRICE **\$42 US / \$55 CAD / £43 GBP**

An essential eye shadow collection featuring 14 full-pigment shades—from neutral to berry tones in matte and metallic finishes.

WHY YOU'LL LOVE IT

- Full-pigment, easy-to-blend formula delivers high color payoff and buildable intensity
- Contains 14 eye shadow shades from soft neutrals to bright shimmers
- Palette includes 9 ultra-matte and 5 metallic finishes
- Includes a dual-ended brush and a large mirror housed inside travel-friendly packaging
- Cruelty-free

HOW TO APPLY

- Little pressure is needed when picking up product.
- Apply light shades to highlight and accentuate features. Apply medium shades to contour and transition color for a blended finish. Apply deeper shades to define and line.
- The included double-ended brush is compact and perfect for on-the-go application. Use the flat end to deposit color, highlight, or pack shadow onto the lid. Use the fluffy end to diffuse and blend.
- All shades can be applied wet or dry to achieve endless looks transitioning from day to night.

PRO TIPS

- For a more intense color payoff, pair the metallic shades with **Dewy Set Setting Spray**.
- Use any of the bright shades as a cheek color.
- Use the deeper matte shades to define the lash line.
- The highlight shades can be used on the face.

PRODUCT PAIRINGS

Liquid Liner
False Lashes
Eye Primer

SHADE BREAKDOWN



SOFT GLAM II MINI EYE SHADOW PALETTE

8 ESSENTIAL SHADES. PORTABLE GLAM. DAY TO NIGHT.

PRICE \$29 USD / \$38 CAD / £30 GBP

An essential collection of warm and cool tone neutral shades for everyday-to-night wear in an on-the-go size.

WHY YOU'LL LOVE IT

- Contains 8 eye shadow shades from soft neutrals to bright shimmers
- Palette includes 6 ultra-matte and 2 metallic finishes
- The full-pigment formula delivers high color payoff and buildable intensity
- Available in a travel-friendly and on-the-go size
- Fragrance and paraben-free
- Cruelty-free

HOW TO APPLY

After applying **Eye Primer**, apply shade *Mulberry* to the lash line and crease. Press shade *Orange Soda* to the center of the lid. Highlight the inner corner and brow bone with shade *Dreamer*. Finish with **Lash Brag Mascara**.

PRO TIPS

- Use a light pressure when picking up product—because the formula is full pigment, a little bit goes a long way.
- Pair metallic shades with Dewy Set Setting Spray for a more intense finish.
- Shades **Tempera** and **Dreamer** can be used to highlight the face.

PRODUCT PAIRINGS

Eye Primer
Lash Brag Mascara
Liquid Liner

SHADE BREAKDOWN



TEMPERA
Ultra-matte velvety beige



DREAMER
Metallic pink champagne



ORANGE SODA
Ultra-matte pastel peach



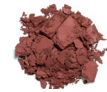
DUSTY ROSE
Ultra-matte dusty lilac



INCENSE
Ultra-matte dusty terra-cotta



SULTRY
Satin metallic warm chocolate brown



MULBERRY
Ultra-matte mulberry



NOIR
Ultra-matte deep carbon black



NORVINA® EYE SHADOW PALETTE

14 WHIMSICAL SHADES. BOLD & BRIGHT MATTES. SOFT PASTEL METALLICS.

PRICE **\$42 US / \$55 CAD / £43 GBP**

Norvina's go-to eye shadow palette, featuring 14 whimsical shades ranging from bold, bright mattes to soft pastel metallics.

WHY YOU'LL LOVE IT

- Full-pigment, easy-to-blend formula delivers high color payoff and buildable intensity
- Contains 14 new cool and warm eye shadow shades, from bold hues to soft pastels
- Palette includes 7 ultra-matte and 7 metallic finishes
- Includes a dual-ended brush and a large mirror housed inside travel-friendly packaging
- Cruelty-free

HOW TO APPLY

- Little pressure is needed when picking up product.
- Apply light shades to highlight and accentuate features. Apply medium shades to contour and transition color for a blended finish. Apply deeper shades to define and line.
- The included double-ended brush is compact and perfect for on-the-go application. Use the flat end to deposit color, highlight, or pack shadow onto the lid. Use the fluffy end to diffuse and blend.
- All shades can be applied wet or dry to achieve endless looks transitioning from day to night.

PRO TIPS

- For a more intense color payoff, pair the metallic shades with **Dewy Set Setting Spray**.
- Pair metallics with a natural fiber brush for maximum payoff.
- Use shade Dreamer as a highlighter shade on the face.
- Use any of the bright shades as a cheek color.
- Use the deeper matte shades to define the lash line.
- Create a gradient smoky eye look using a cool-tone shade for contouring and a warm-tone shade for blending out. The contrast between the warm and cool tones come together to create a high-impact eye look.

PRODUCT PAIRINGS

Waterproof Crème Color
Darkside Waterproof Creme Color
Highlighting Duo Pencil

SHADE BREAKDOWN



AMREZY PALETTE

AMREZY'S CAN'T-LIVE-WITHOUT SHADES.

PRICE \$49 US / \$65 CAD / £49 GBP

A limited-edition palette of Amrezy's 16 favorite shades.

WHY YOU'LL LOVE IT

- First ABH palette to feature 16 all-new shades, including 10 eye shadows, 4 pressed pigments and 2 pressed glitters
- Full-pigment formula is easy to blend and delivers high color payoff and buildable intensity
- Wide shade range includes stunning rosy tones, flattering neutrals and deep smoky hues
- Includes a dual-ended brush and a large mirror housed inside pink, sparkly packaging with gold Amrezy branding
- Perfect for everyone from the makeup beginner to the experienced artist
- Formulated without parabens and gluten
- Noncomedogenic, dermatologist tested and clinically tested
- Cruelty-free

HOW TO APPLY

- Little pressure is needed when picking up product.
- Apply light shades to highlight and accentuate features. Apply medium shades to contour and transition color for a blended finish. Apply deeper shades to define and line.
- The included double-ended brush is compact and perfect for on-the-go application. Use the flat end to deposit color, highlight, or pack shadow onto the lid. Use the fluffy end to diffuse and blend.
- All shades can be applied wet or dry to achieve endless looks transitioning from day to night.

PRO TIPS

- For self-application of pressed glitter shades, apply with fingertips using pressing motions.
- Prep with **ABH Eye Primer** prior to applying these highly pigmented shades to lock them in place, ensuring maximum color payoff and performance.
- Use a small, dense brush to deposit the shadows, pressed pigments or pressed glitters. Use a fluffy brush to blend.
- Mist brush with- after picking up product for a more intense color payoff.

PRODUCT PAIRINGS

Liquid Liner
False Lashes
Eye Primer

SHADE BREAKDOWN

EYE SHADOWS



PRESSED PIGMENTS FOR CHEEKS



* Pressed pigment shades are not intended for use around the immediate eye area.

** Pressed glitter shades are not intended for use around the immediate eye area

EYE SHADOW SINGLES

EIGHT FINISHES. INTENSE PIGMENT. ENDLESS OPTIONS.

PRICE **\$12 US / \$14 CAD**

Individual pans of Anastasia Beverly Hills' finely milled, easy-to-blend, full-pigment eye shadow formula available in a wide array of shades and 8 finishes.

WHY YOU'LL LOVE IT

- Purchase 4 or more shades and receive a free 4-well, 6-well or 8-well palette, so you can create your own custom, professional-quality palette
- Full-pigment formula delivers high color payoff and buildable intensity
- Each shade blends seamlessly, has zero fallout during application and lasts all day
- Cruelty-free
- Available in wide array of shades (retailer assortments will vary)
- Choose from 8 finishes:
 - **TITANIUM:** Highly pigmented metallic with a smooth texture and intense multidimensional shimmer
 - **DUO CHROME:** High-intensity chrome with color-shifting, prismatic iridescence
 - **ULTRA-MATTE:** Opaque, high-coverage matte with a smooth, creamy-soft texture
 - **METALLIC:** Rich, velvety texture with a versatile reflect and high-shine metallic finish
 - **SATIN:** Luminous, decadent color with a demi-matte finish and reflective sheen

- **SHIMMER:** Lustrous color with a light-reflecting gleam
- **SPARKLE:** Smooth matte finish with dazzling, light-reflective particles
- **VELVET:** Weightless, buttery texture with a soft, subtle sheen

HOW TO APPLY

- The formula is full pigment, so a little bit goes a long way. Use light pressure when picking up product.
- Apply light shades to highlight and accentuate features. Apply medium shades to contour and transition color for a blended finish. Apply deeper shades to define and line.

PRO TIPS

- For a more intense reflect and color payoff, pair your metallic and duo chrome eye shadow shades with **Dewy Set Setting Spray**.
- Apply any **Eye Shadow** shade with a duo chrome finish over your **Darkside Waterproof Gel Liner** application for a more intense color effect.
- Add a metallic effect to your lip look by applying an **Eye Shadow** shade with a metallic or duo chrome finish on top of your **Liquid Lipstick** or **Matte Lipstick** application.

SHADE BREAKDOWN



PRODUCT PAIRINGS

Pro Pencil
Darkside Waterproof Gel Liner
Waterproof Crème Color



4-WELL EYE SHADOW PALETTE

PORTABLE. CUSTOMIZABLE.

PRICE \$40 US / \$52 CAD

4 Eye Shadow Singles + complimentary 4-Well Eye Shadow Palette

A refillable, magnetic 4-well palette that fits Anastasia Beverly Hills **Eye Shadow Singles**.

WHY YOU'LL LOVE IT

- Sleek, travel-friendly packaging comes complete with a magnetic closure to keep shadows secure
- ABH **Eye Shadow Singles** magnetically adhere to the empty pans for easy customization
- Each empty pan features finger notches for easy shadow removal
- Purchase 4 or more **Eye Shadow Singles** and receive a free 4-well, 6-well or 8-well palette, so you can create your own custom, professional-quality palette

HOW TO USE

HOW TO SET UP YOUR 4-WELL PALETTE:

- Select 4 shades: ABH suggests 1 highlight, 1 contour, 1 accent, and 1 defining shade
- **HIGHLIGHT** shades are lighter in color and vary in finish from ultra-matte to metallic.
- **CONTOUR** shades are mid-tone ultra-matte shadows that are cool or warm in undertone.
- **ACCENT** shades are a pop of color (or any shade of your choice). Choose from any finish.
- **DEFINING** shades are deeper in tone than contour shades and create additional depth. Choose from any finish.
- Use the palette's lid as a mixing plate for liquids, creams and gels.
- Customize this eye shadow quad and keep it in your purse for on-the-go touch-ups.

PRO TIPS

- For a more intense reflect and color payoff, pair your metallic and duo chrome eye shadow shades with **Dewy Set Setting Spray**.
- Apply any **Eye Shadow** shade with a duo chrome finish over your **Darkside Waterproof Gel Liner** application for a more intense color effect.
- Add a metallic effect to your lip look by applying an **Eye Shadow** shade with a metallic or duo chrome finish on top of your **Liquid Lipstick** or **Matte Lipstick** application.

PRODUCT PAIRINGS

Eye Shadow Singles

6-Well Eye Shadow Palette

8-Well Eye Shadow Palette

DARKSIDE WATERPROOF GEL LINER

INTENSE BLACK. WATERPROOF LINER. ALL-DAY WEAR.

PRICE \$18 US / \$23 CAD / £18 GBP

A retractable, waterproof gel eyeliner pencil that offers intense, matte-black pigment.

WHY YOU'LL LOVE IT

- Full-pigment, true-black gel formula stays put all day and doesn't run
- Retractable tip makes it easy to apply the right amount of product with control and helps prevent breakage
- Includes a detachable sharpener on the end, so you can sharpen the pencil anytime, anywhere
- Can be used in the waterline
- Cruelty-free

HOW TO APPLY

- Apply **Darkside Waterproof Gel Liner** directly along the upper and lower lash lines and in the waterline. Continue application until desired level of intensity is achieved.

PRO TIPS

- Apply **Darkside Waterproof Gel Liner** as an eye shadow base to create a more intense shadow effect and to add a transformative element to your eye look.
- Use **Darkside Waterproof Gel Liner** to create detailed line work for character makeup.
- Use a small shader brush to smudge your **Darkside Waterproof Gel Liner** application for a smoky eye effect.

PRODUCT PAIRINGS

Waterproof Crème Color
Eye Shadow Singles
A1 Pro Brush



WATERPROOF CRÈME COLOR

OPAQUE PIGMENT. WATERPROOF WEAR.

PRICE \$18 US / \$23 CAD / £18 GBP



A full-pigment, waterproof cream color that delivers high coverage and precise definition, ideal for shadow or liner application.

WHY YOU'LL LOVE IT

- Waterproof formula delivers full coverage with intense pigment
- Smooth cream formula blends easily and dries down to a matte finish that won't budge or run
- Our cult-favorite shade, **Jet**, delivers intense black pigment
- Cruelty-free and vegan

HOW TO USE

- Using **Brush 3**, pick up a small amount of **Waterproof Crème Color** and apply along the lash line to create a precise liner look.
- For use as an eye shadow base, buff **Waterproof Crème Color** onto the lids using a synthetic eye shadow brush.

PRO TIPS

- Apply **Waterproof Crème Color** as an eye shadow base prior to your metallic eye shadow application for an amplified reflect.
- Apply **Waterproof Crème Color** in the waterline for an intensely pigmented liner look.
- Layer **Eye Shadow** or **Glow Kit** shades on top of your **Waterproof Crème Color** for a custom effect.

PRODUCT PAIRINGS

Eye Shadow Singles
Eye Shadow Palettes
Brush 3

SHADE BREAKDOWN



JET

EYE PRIMER

WATER-RESISTANT. LONG-WEARING. PERFECT CANVAS.

PRICE **\$23 US / \$30 CAD / £24 GBP**

A water-resistant eye primer in a light-colored base that creates the perfect canvas for matte and shimmer shadows and pressed pigments.

WHY YOU'LL LOVE IT

- Water-resistant and long-wearing
- Cream formula glides on smoothly and creates the perfect base for eye shadow application
- Helps ensure smooth, blendable application and smudge-free wear of matte, metallic and shimmer shadows and pressed pigment shades
- Light-colored base enhances vibrancy, color payoff and durability of shadows and pressed pigments
- Reduces the appearance of fine lines
- Squeeze tube allows you to dispense the perfect amount of product
- Formulated without parabens, gluten, phthalates, oil and alcohol
- Noncomedogenic, ophthalmologist tested, dermatologist tested and clinically tested
- Cruelty-free and vegan

HOW TO APPLY

- A little product goes a long way. Dispense just a tiny amount of product and smooth over entire lid prior to shadow application. Apply using your fingertips or a small concealer brush.

PRO TIPS

- Apply **Eye Primer** to the entire eye area (upper lid, lower lid, brow bone, inner corner) to help maximize the color payoff of your shadow and liner applications.
- Wear **Eye Primer** alone for a natural-looking eye look.
- Mix **Eye Primer** with your favorite shadows or pigments to create your own custom cream shadows.

PRODUCT PAIRINGS

Eye Shadow Singles
Eye Shadow Palettes
Darkside Waterproof Gel Liner





LOOSE PIGMENT

SUPERFINE. ULTRA SHIMMER.

PRICE **\$22 US / \$29 CAD / £25 GBP**

A finely milled, shimmering loose pigment that delivers a pearlescent metallic finish for eyes, face and body.

WHY YOU'LL LOVE IT

- Lightweight, finely milled loose powder formula features highly concentrated shimmer shades with a pearlescent finish
- Delivers an intense color payoff and multidimensional shimmer
- Provides a smooth application that glides onto skin
- Allows for versatile application with customizable levels of intensity
- Use shades alone or layered over each other
- Natural-hued tones look great on all skin tones
- Can be used on the eyes, face and body
- Formulated without parabens, gluten, phthalates and oil
- Noncomedogenic, dermatologist tested and clinically tested
- Cruelty-free and vegan
- Available in 5 shades

HOW TO USE

- Prime lids with ABH Eye Primer prior to your **Loose Pigment** application to ensure longer-lasting wear and maximum color payoff.
- Use a small, flat eye shadow brush to apply product to the lid. Use a fluffy brush to blend.
- Shades can be worn alone or layered over each other.
- **Loose Pigment** shades can be applied using a dry eye shadow or powder brush. Or, for a more intensified color payoff, mist brush with **Dewy Set Setting Spray** prior to dipping into product.

PRO TIPS

- Use **A14 Pro Brush** to apply **Loose Pigment** with precision to delicate areas of the face, such as the inner corner of the eye, brow bone or Cupid's bow.
- Use **A23 Pro Brush** to apply **Loose Pigment** to the high points of the face for the perfect highlighter look.

SHADE BREAKDOWN



PRODUCT PAIRINGS

Eye Primer
A14 Pro Brush
Dewy Set Setting Spray



LIQUID LINER

HIGHLY PIGMENTED. TRUE-BLACK MATTE LIQUID LINER.
FELT-TIP PRECISION APPLICATOR.

PRICE \$18 US / \$23 CAD / £19 GBP

A waterproof, highly pigmented, true-black matte liquid liner with a soft felt-tip precision applicator that glides on evenly.

WHY YOU'LL LOVE IT

- Long-lasting, waterproof, full-pigment formula
- Highly saturated, true-black matte shade
- Ultra-fine felt tip is easy to use and allows for precise, controlled application
- Super-fluid, water-based gel formula glides on effortlessly
- Dries quickly with an intense color payoff
- Goes on smoothly and stays in place—no skipping, feathering, running, flaking or fading
- Versatile application lets you create everything from superfine lines and perfect cat-eyes to bold eyeliner looks
- Formulated without parabens, gluten, phthalates, alcohol or mineral oil
- Clinically tested and dermatologist tested
- Cruelty-free and vegan

HOW TO APPLY

- Shake well before use.
- With light pressure, use the felt tip applicator to create sharp, precise lines. With more pressure, use the flat side of the applicator to create bolder, thicker lines.

PRO TIPS

- When not in use, always keep the cap on tightly and the component standing upright (tip facing down) so product is always ready to apply.
- To ensure a precise application every time, wipe off the brush tip with a damp tissue to clean the brush between uses.
- For a winged liner look, begin by drawing the tail end, creating a line that extends from the lash line outward. Then, draw a straight line starting at the tail end toward the center of the lid. Fill in the outline. Finish by extending the liner from the center of the lid toward the inner corner.
- Can be used on the face and body to create detailed line work.

PRODUCT PAIRINGS

Eye Primer
Eye Shadow Palettes
False Lashes



NORVINA® PRO PIGMENT PALETTE VOL. 1

25 DELUXE-SIZED, HIGH-PERFORMANCE SHADES. PROFESSIONAL-GRADE ARTISTRY. MAXIMUM PAYOFF.

PRICE \$60 US / \$78 CAD / £68 GBP

A professional-grade artistry palette featuring 25 deluxe-sized, high-performance shades with maximum payoff.

WHY YOU'LL LOVE IT

- Contains 25 professional pigments in oversized pans to offer limitless possibilities and endless amounts of looks
- Includes highly pigmented iconic colors, daring brights and vibrant hues
- Perfect for the artist who wants to have the ultimate color collection and for the makeup fanatic who is ready to take their makeup creativity to the next level
- Advanced artistry palette housed inside a beautiful square-cut purple case with gold accents and the ABH x Norvina® logo on the outside and an extra-large mirror on the inside
- Formulated without gluten, parabens and phthalates
- Noncomedogenic and dermatologist tested
- Cruelty-free and vegan

HOW TO APPLY

- Little pressure is needed when picking up product.
- Apply light shades to highlight and accentuate features. Apply medium shades to contour and transition color for a blended finish. Apply deeper shades to define and line.
- Use a small, dense brush to deposit the pressed pigments and shadows. Use a fluffy brush to blend.
- Apply **ABH Eye Primer** to help these highly saturated shades adhere and stay in place, ensuring maximum color payoff and performance.

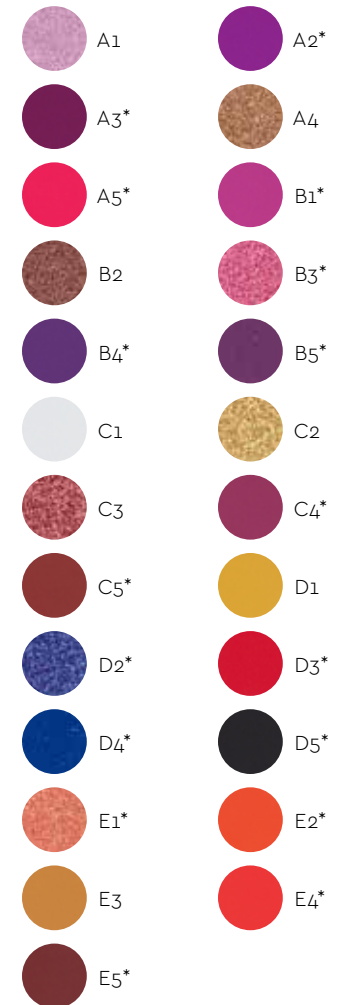
PRO TIPS

- Apply any of the bright shades to the cheek area as a blush.
- Mix shades together to create your own custom colors.
- All shades can be applied to the face and body.
- Mist brush with **Dewy Set Setting Spray** after picking up product for a more intense payoff of shimmer or metallic shades.

PRODUCT PAIRINGS

Liquid Liner
Eye Primer
Dewy Set Setting Spray

SHADE BREAKDOWN



*A2, A3, A5, B1, B3, B4, B5, C4, C5, D2, D3, D4, D5, E1, E2, E4 and E5 are not intended for use around the immediate eye area.

NORVINA® PRO PIGMENT PALETTE VOL. 2

25 DELUXE-SIZED, PROFESSIONAL-GRADE, HIGH-PERFORMANCE SHADES WITH AN AQUA-THEMED COLOR STORY.

PRICE **\$60 US / \$78 CAD / £68 GBP**

A professional-grade artistry palette featuring 25 deluxe-sized, high-performance shades with a gorgeous aqua-themed color story.

WHY YOU'LL LOVE IT

- Contains 25 professional pigments in oversized pans to offer limitless possibilities and endless amounts of looks
- Includes a wide range of highly pigmented aqua-themed colors
- Perfect for the artist who wants to have the ultimate color collection and for the makeup fanatic who is ready to take their makeup creativity to the next level
- Advanced artistry palette housed inside a beautiful, square-cut, sea-foam-green case with gold mermaid-like accents and the ABH x Norvina® logo on the outside and an extra-large mirror on the inside
- Formulated without gluten, parabens and phthalates
- Noncomedogenic and dermatologist tested
- Cruelty-free and vegan

HOW TO APPLY

- Little pressure is needed when picking up product.
- Apply light shades to highlight and accentuate features. Apply medium shades to contour and transition color for a blended finish. Apply deeper shades to define and line.
- Use a small, dense brush to deposit the pressed pigments and shadows. Use a fluffy brush to blend.
- Apply ABH **Eye Primer** to help these highly saturated shades adhere and stay in place, ensuring maximum color payoff and performance.

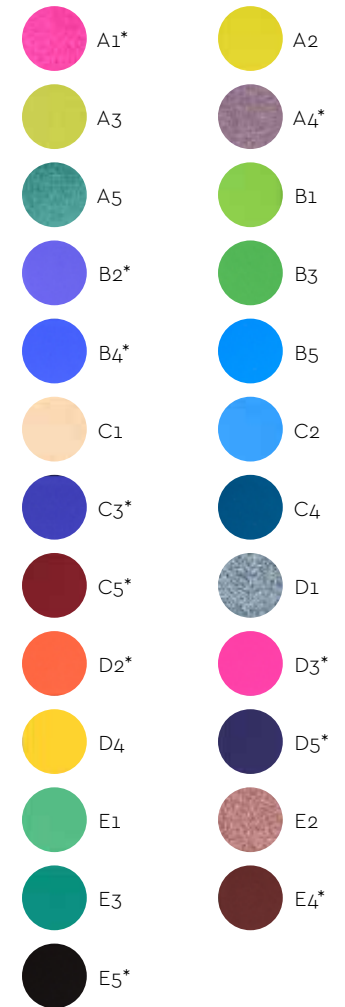
PRO TIPS

- Apply any of the bright shades to the cheek area as a blush.
- Mix shades together to create your own custom colors.
- All shades can be applied to the face and body.
- Mist brush with **Dewy Set Setting Spray** after picking up product for a more intense payoff of shimmer or metallic shades.

PRODUCT PAIRINGS

Liquid Liner
Eye Primer
Dewy Set Setting Spray

SHADE BREAKDOWN



*A2, A4, B2, B4, C3, C5, D2, D3, D5, E4 and E5 are not intended for use around the immediate eye area.



NORVINA® PRO PIGMENT PALETTE VOL. 3

25 DELUXE-SIZED, PROFESSIONAL-GRADE, HIGH-PERFORMANCE SHADES WITH AN AUTUMN-INSPIRED COLOR STORY.

PRICE **\$60 US / \$78 CAD / £68 GBP**

A professional-grade artistry palette featuring 25 deluxe-sized, high-performance shades with a stunning autumn-inspired color story.

WHY YOU'LL LOVE IT

- Contains 25 professional pigments in oversized pans to offer limitless possibilities and endless amounts of looks
- Includes a wide range of bold, vibrant, highly pigmented autumn-inspired colors
- Perfect for the artist who wants to have the ultimate color collection and for the makeup fanatic who is ready to take their makeup creativity to the next level
- Advanced artistry palette housed inside a beautiful, square-cut, orange case that features gold butterfly motifs and the ABH x Norvina® logo on the outside and an extra-large mirror on the inside
- Formulated without gluten, parabens and phthalates
- Noncomedogenic and dermatologist tested
- Cruelty-free and vegan

HOW TO APPLY

- Little pressure is needed when picking up product.
- Apply light shades to highlight and accentuate features. Apply medium shades to contour and transition color for a blended finish. Apply deeper shades to define and line.
- Use a small, dense brush to deposit the pressed pigments and shadows. Use a fluffy brush to blend.
- Apply ABH **Eye Primer** to help these highly saturated shades adhere and stay in place, ensuring maximum color payoff and performance.

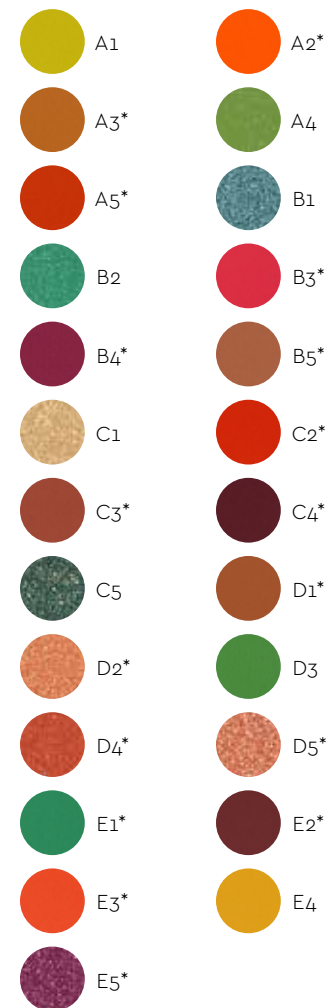
PRO TIPS

- Apply any of the bright shades to the cheek area as a blush.
- Mix shades together to create your own custom colors.
- All shades can be applied to the face and body.
- Mist brush with Dewy Set Setting Spray after picking up product for a more intense payoff of shimmer or metallic shades.

PRODUCT PAIRINGS

Liquid Liner
Eye Primer
Dewy Set Setting Spray

SHADE BREAKDOWN



*A2, A3, A5, B3, B4, B5, C2, C3, C4, D1, D2, D4, D5, E1, E2, E3 and E5 are not intended for use around the immediate eye area.



NORVINA® PRO PIGMENT PALETTE VOL. 4

25 DELUXE-SIZED, PROFESSIONAL-GRADE, HIGH-PERFORMANCE SHADES WITH A SPRING-INSPIRED COLOR STORY.

PRICE \$60 US / \$78 CAD / £68 GBP

A professional-grade artistry palette featuring 25 deluxe-sized, high-performance shades with a spring-inspired color story.

WHY YOU'LL LOVE IT

- Contains 25 professional pigments and shadows in oversized pans to offer limitless possibilities and endless amounts of looks
- Includes a wide range of highly pigmented spring-inspired colors, from fresh floral tones and bright pops of color to muted mauves and rich neutrals
- Perfect for the artist who wants to have the ultimate color collection and for the makeup fanatic who is ready to take their makeup creativity to the next level
- Advanced artistry palette housed inside a beautiful, square-cut, light pink case with gold ABH x NORVINA® branding on the outside and an extra-large mirror on the inside
- Formulated without gluten and parabens
- Noncomedogenic and dermatologist tested
- Cruelty-free and vegan

HOW TO APPLY

- Little pressure is needed when picking up product.
- Apply light shades to highlight and accentuate features. Apply medium shades to contour and transition color for a blended finish. Apply deeper shades to define and line.
- Use a small, dense brush to deposit the pressed pigments. Use a fluffy brush to blend.
- Prep with **ABH Eye Primer** prior to applying these highly pigmented shades to lock them in place, ensuring maximum color payoff and performance.

PRO TIPS

- Apply any of the bright shades to the cheek area as a blush. Apply any of the bronzy, warm-toned shades to the hollows of the cheek to contour to the face.
- Mix shades together to create your own custom colors.
- All shades can be applied to the face and body.
- Mist brush with **Dewy Set Setting Spray** after picking up product for a more intense payoff of shimmer and metallic shades.

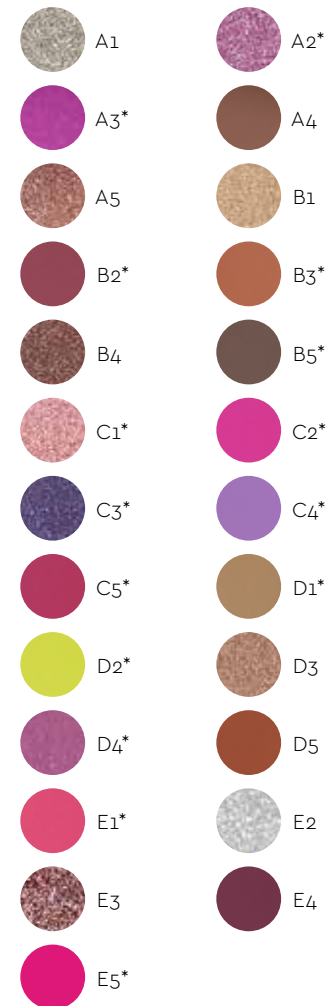
PRODUCT PAIRINGS

Liquid Liner

Eye Primer

Dewy Set Setting Spray

SHADE BREAKDOWN



*Shades **A2, A3, B2, B3, B5, C1, C2, C3, C4, C5, D1, D2, D4, E1, E4** and **E5** are not intended for use around the immediate eye area.



MINI NORVINA® PRO PIGMENT PALETTE VOL. 1

9 SHADES OF NORVINA. 1 ADORABLE MINI PALETTE.

PRICE \$29 US / \$38 CAD / £33 GBP

A limited-edition mini color collection featuring high-performance matte and metallic shades handpicked by Norvina.

WHY YOU'LL LOVE IT

- Contains 9 full-size, high-performance pressed pigments and shadows with a broad, artistic shade range, from rich matte colors to bright metallic shimmers
- The perfect gift for the artist who wants to expand their color collection or for the makeup fanatic who is ready to take their makeup creativity to the next level
- Modern, sleek miniature-size component includes a black-and-white chevron pattern with the **ABH x NORVINA®** logo on the outside and a mirror on the inside
- Formulated without gluten, parabens or phthalates
- Dermatologist tested and noncomedogenic
- Cruelty-free

HOW TO APPLY

- Little pressure is needed when picking up product.
- Apply light shades to highlight and accentuate features. Apply medium shades to contour and transition color for a blended finish. Apply deeper shades to define and line.
- Use a small, dense brush to deposit the pressed pigments. Use a fluffy brush to blend.
- Apply **ABH Eye Primer** to help these highly saturated shades adhere and stay in place, ensuring maximum color payoff and performance.

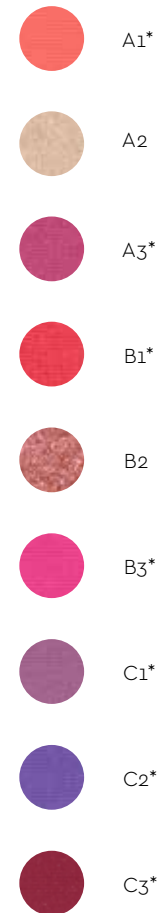
PRO TIPS

- Apply any of the bright shades to the cheek area as a blush.
- Mix shades together to create your own custom colors.
- All shades can be applied to the face and body.
- Mist brush with **Dewy Set Setting Spray** after picking up product for a more intense payoff of shimmer or metallic shades.

PRODUCT PAIRINGS

Mini NORVINA® Pro Pigment Palette Vol. 2
Mini NORVINA® Pro Pigment Palette Vol. 3
Eye Primer

SHADE BREAKDOWN



*Shades **A1**, **A3**, **B1**, **B3**, **C1**, **C2** and **C3** are not intended for use around the immediate eye area.

MINI NORVINA® PRO PIGMENT PALETTE VOL. 2

9 SHADES OF NORVINA. 1 ADORABLE MINI PALETTE.

PRICE \$29 US / \$38 CAD / £33 GBP



A limited-edition mini color collection featuring bright, vibrant, high-performance shades handpicked by Norvina.

WHY YOU'LL LOVE IT

- Contains 9 full-size, high-performance pressed pigments and shadows with an artistic shade range that includes vibrant brights, deep mattes and extreme metallic shimmers
- The perfect gift for the artist who wants to expand their color collection or for the makeup fanatic who is ready to take their makeup creativity to the next level
- Modern, sleek miniature-size component includes a geometric-like sunset rendering with the ABH x NORVINA® logo on the outside and a mirror on the inside
- Formulated without gluten, parabens or phthalates
- Dermatologist tested and noncomedogenic
- Cruelty-free

HOW TO APPLY

- Little pressure is needed when picking up product.
- Apply light shades to highlight and accentuate features. Apply medium shades to contour and transition color for a blended finish. Apply deeper shades to define and line.
- Use a small, dense brush to deposit the pressed pigments. Use a fluffy brush to blend.
- Apply **ABH Eye Primer** to help these highly saturated shades adhere and stay in place, ensuring maximum color payoff and performance.

PRO TIPS

- Apply any of the bright shades to the cheek area as a blush.
- Mix shades together to create your own custom colors.
- All shades can be applied to the face and body.
- Mist brush with **Dewy Set Setting Spray** after picking up product for a more intense payoff of shimmer or metallic shades.

PRODUCT PAIRINGS

Mini NORVINA® Pro Pigment Palette Vol. 1

Mini NORVINA® Pro Pigment Palette Vol. 3

Eye Primer

SHADE BREAKDOWN



*Shades **A3**, **B1**, **C1**, and **C2** are not intended for use around the immediate eye area.

MINI NORVINA® PRO PIGMENT PALETTE VOL. 3

SWEET CHERRY VIBES.

PRICE \$29 US / \$38 CAD / £33 GBP

A limited-edition mini color collection featuring high-performance matte and metallic cherry shades handpicked by Norvina.

WHY YOU'LL LOVE IT

- Contains 9 full-size, high-performance pressed pigments and shadows with a cherry-themed color story ranging from rich mattes to sparkly metallics
- Perfect for the artist who wants to expand their color collection or for the makeup fanatic who is ready to take their makeup creativity to the next level
- Modern, sleek miniature-size component features ABH x NORVINA® branding and a darling cherry pattern over a teal background
- Includes a mirror on the inside
- Formulated without gluten and parabens
- Noncomedogenic and dermatologist tested
- Cruelty-free and vegan

HOW TO APPLY

- Little pressure is needed when picking up product.
- Apply light shades to highlight and accentuate features. Apply medium shades to contour and transition color for a blended finish. Apply deeper shades to define and line.
- Use a small, dense brush to deposit the pressed pigments. Use a fluffy brush to blend.
- Apply ABH **Eye Primer** to help these highly saturated shades adhere and stay in place, ensuring maximum color payoff and performance.

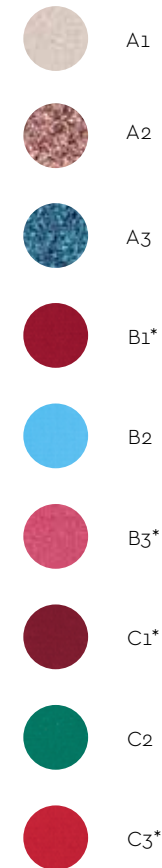
PRO TIPS

- Apply any of the bright shades to the cheek area as a blush.
- Mix shades together to create your own custom colors.
- All shades can be applied to the face and body.
- Mist brush with **Dewy Set Setting Spray** after picking up product for a more intense payoff of shimmer or metallic shades.

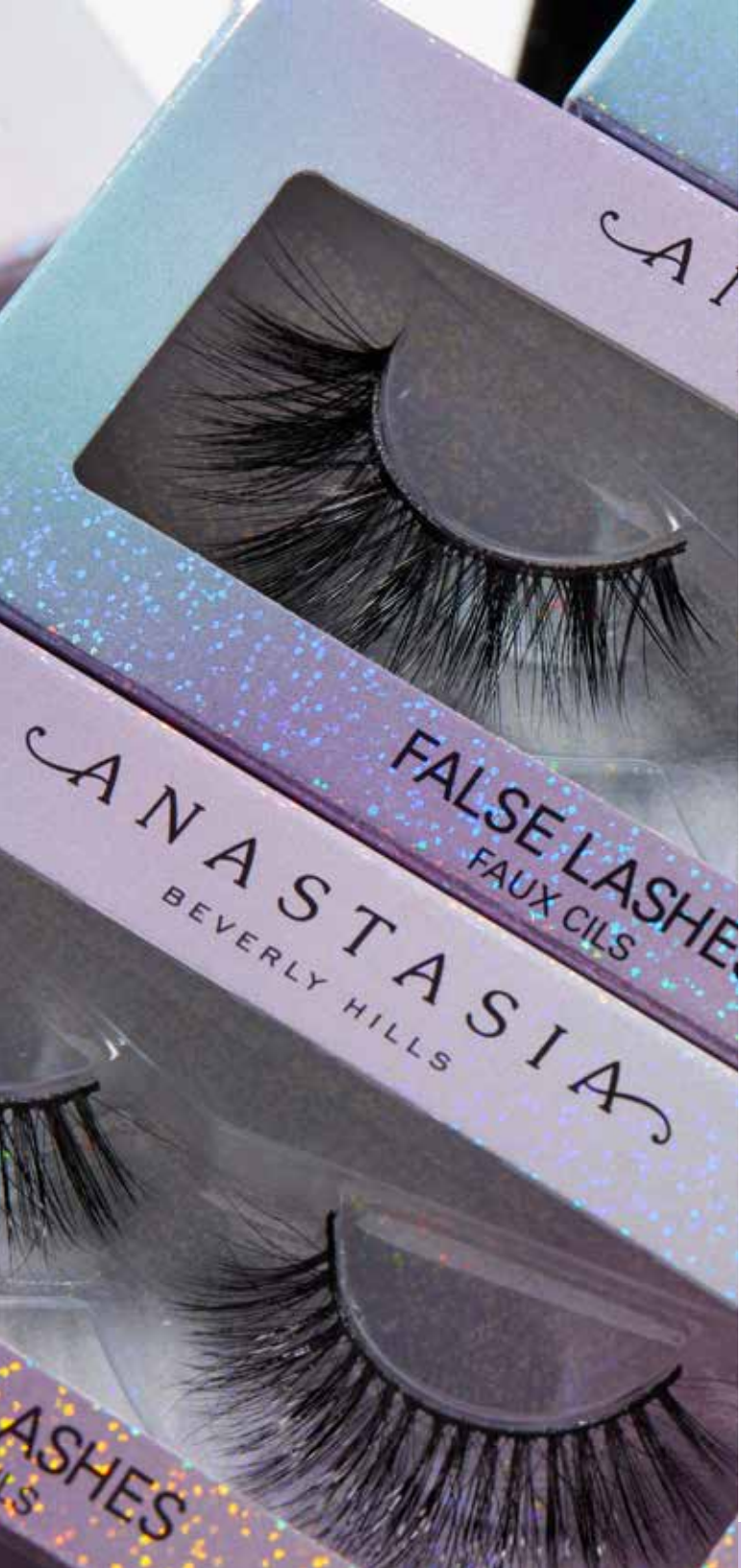
PRODUCT PAIRINGS

Mini NORVINA® Pro Pigment Palette Vol. 1
Mini NORVINA® Pro Pigment Palette Vol. 3
Eye Primer

SHADE BREAKDOWN



*Shades **B1**, **B3**, **C1** and **C3** are not intended for use around the immediate eye area.



FALSE LASHES

LIVE YOUR BEST LASH LIFE.

PRICE \$12 US / \$16 CAD / £14 GBP

Premium-quality false lashes with easy-to-apply, comfortable, undetectable wear. Available in multiple styles.

WHY YOU'LL LOVE IT

- Synthetic sets feature premium-quality, vegan, synthetic fibers
- Natural sets feature premium-quality natural fibers
- Easy to apply full-track lashes that effortlessly adhere to the lash line
- Lightweight, comfortable wear that doesn't weigh down your natural lashes and remains undetectable
- Increases the look of lash volume, length and thickness
- Flatters any eye shape and size or makeup looks
- Versatile style range offers everything from natural-looking to dramatic, extra-fluttery lash styles
- Comes in a sturdy storage case that keeps lashes fresh and protected in your makeup bag or kit
- Each synthetic set provides up to 20 wears with proper care
- Each natural set provides up to 5 wears with proper care
- Handmade
- Cruelty-free

HOW TO APPLY

- **APPLYING YOUR LASHES:** Place a small amount of lash adhesive onto a metal mixing plate. Allow the adhesive to get tacky (about 1 minute). Then, dip the tail end of a pair of tweezers into the adhesive and apply the adhesive to the band of your with control. Wait another 30 seconds. Holding your **False Lashes** at the center, gently press the lashes onto the center of your upper lash line. Then, press down the outer edges of the lash band onto your lash line. Allow **False Lashes** to dry in place. For a more seamless lash look, secure your application by gently pinching the lash band and your lash line together.
- **REMOVING YOUR LASHES:** Use your fingers to gently pull the band of the **False Lashes** starting from the outer corner and moving toward the center of your face. Be sure not to pull the faux lashes themselves to avoid tear. Avoid touching your natural lashes.
- **CLEANING YOUR LASHES:** Immediately clean your **False Lashes** after use. Gently remove the adhesive by lightly massaging the lash band with your fingertip. To remove any excess adhesive that may remain on the band, first lay the lashes on a flat surface, then use a clean

cotton swab dipped in a small amount of micellar water and gently wipe along the lash band. If any adhesive remains along your lash line, use a clean cotton swab dipped in a small amount of micellar water and gently wipe to remove.

- **STORING YOUR LASHES:** When not in use, return your **False Lashes** to their storage case to keep them protected and to help maintain their proper shape. This also helps ensure your faux lashes go on seamlessly the next time you apply.

PRO TIPS

- To help extend the life of your **False Lashes**, apply mascara to your natural lashes before your faux lash application to prevent too much product from getting on your **False Lashes**.

STYLE BREAKDOWN

LENGTHY
SNASY
SO HOLLYWOOD
DOMINA
DREAMY
FASHION
GORGINA
ELEGANZA

PRODUCT PAIRINGS

Scissors
Liquid Liner
Eye Primer



LASH BRAG VOLUMIZING MASCARA

EXTREME VOLUME MASCARA. BRAGGING RIGHTS INCLUDED.

PRICE **\$25 US / \$33 CAD / £26 GBP**

Achieve maximum lash volume and fullness you can't stop bragging about with this jet-black, ultra-volumizing mascara.

WHY YOU'LL LOVE IT

- Instantly adds the look of dramatic volume, fullness and thickness to any lash type
- Features an intense, highly pigmented jet-black color
- Water-resistant formula glides on effortlessly for a comfortable wear that lasts all day
- Specially designed hourglass-shaped brush delivers the perfect amount of product onto each lash with buildable volume and length
- Ultra-creamy formula is designed to prevent clumping and doesn't dry out lashes, fade or smear
- Formulated without parabens, gluten and phthalates
- Ophthalmologist reviewed, dermatologist tested and clinically tested
- Cruelty-free

In a 116-person consumer survey:

- 91% saw increased volume and length
- 89% saw increased fullness and long-wearing results
- 92% saw intense, jet-black color

HOW TO APPLY

- Begin by applying mascara to your bottom lashes from base to tips. Then, starting at the base of your top lashes, sweep the brush through to the tips. Apply over the top of the lashes as well as under to create an extra-voluminous look. Apply additional coats as desired.

PRO TIPS

- Before applying **Lash Brag** for the first time, wipe off excess product from the wand onto the rim of the tube.
- For an extra boost, apply a lash primer prior to your **Lash Brag** application.
- For best results, remove the mascara using an oil-based makeup remover or micellar water.

PRODUCT PAIRINGS

Liquid Liner
Darkside Waterproof Gel Liner
Waterproof Crème Color

MINI LASH BRAG MASCARA ORNAMENT

GIVE THE GIFT OF BRAGGING RIGHTS.
PRICE **\$13 USD / \$16.90 CAN / £14 GBP**



Achieve maximum lash volume and fullness you can't stop bragging about with this jet-black, ultra-volumizing mascara.

WHY YOU'LL LOVE IT

- Instantly adds the look of dramatic volume, fullness and thickness to any lash type
- Features an intense, highly pigmented jet-black color
- Specially designed hourglass-shaped brush delivers the perfect amount of product onto each lash with buildable volume and length
- Ultra-creamy formula is designed to prevent clumping and doesn't dry out lashes, fade or smear
- Ophthalmologist reviewed, dermatologist tested and clinically tested
- Paraben and cruelty-free

In a 116-person consumer survey:

91% saw increased volume and length

89% saw increased fullness and long-wearing results

92% saw intense, jet-black color

HOW TO APPLY

For the best mascara experience, begin by applying to your bottom lashes from base to tips. Then, starting at the base of your top lashes, sweep the mascara wand through to the tips. Apply over the top of the lashes as well as under to create an extra-voluminous look. Apply additional coats as desired.

PRO TIPS

- Before applying **Lash Brag Mascara** for the first time, wipe off excess product from the wand onto the rim of the tube.
- For best results, remove the mascara using an oil-based makeup remover or micellar water.

PRODUCT PAIRINGS

Eye Primer
Liquid Liner
Soft Glam Eye Shadow Palette

SHADE



Black

LIPS

LIQUID LIPSTICK

ALL-DAY WEAR. INTENSE PIGMENT.

PRICE **\$20 US / \$26 CAD / £20 GBP**

A full-pigment liquid lipstick formula that dries down to a weightless matte finish for smudge-proof wearability.

WHY YOU'LL LOVE IT

- Full-coverage, ultra-saturated pigment
- Long-wearing, comfortable matte formula
- Features a double-sided flat applicator with a rounded tip that distributes the perfect amount of product for precise application
- Can be used on the lips, face and body
- Cruelty-free and vegan
- Available in a wide array of shades (retailer assortments will vary)

HOW TO APPLY

- Begin by outlining the Cupid's bow with the precise applicator. Fill in the remainder of the top lip. Outline the bottom lip and fill. Highlight the perimeter of the lips using **Pro Pencil** and blend into the skin using **Brush 20** or **Brush 3** to create clean edges.

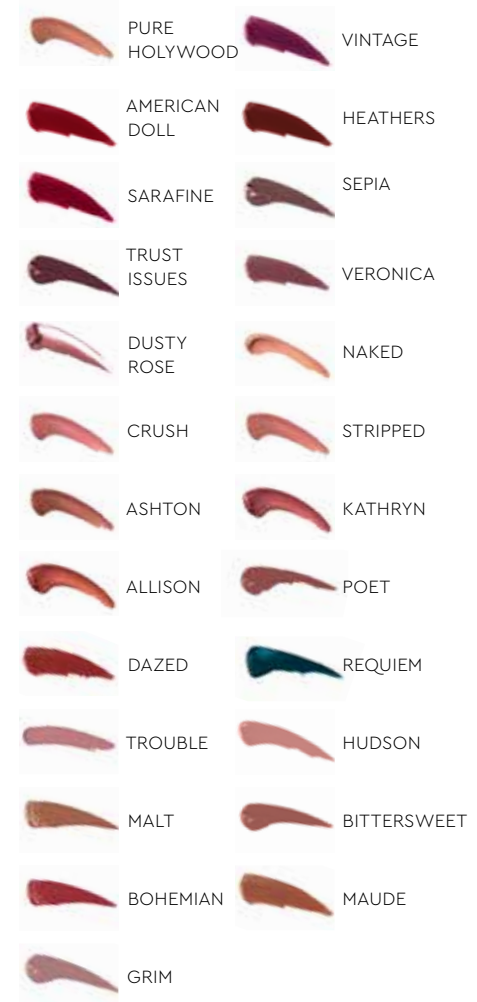
PRO TIPS

- The long-wearing shades are versatile enough for customization, so you can mix and match multiple shades together without losing pigment.
- Create a fuller lip effect by applying a lighter shade onto the center of the lips and then lining the lips using a deeper shade.
- To create the look of a sheer lip stain, apply a small amount of **Liquid Lipstick** with your fingertip and blend out.
- Wear alone or layer with **Lip Gloss** for a light-reflective, plumped-up lip look.
- Can be pressed into the cheeks as blush.
- To add structure and volume, line and sculpt the lips with **Brow Definer** in shade **Auburn** or **Chocolate** prior to your **Liquid Lipstick** application.

PRODUCT PAIRINGS

Lip Primer
Lip Gloss
Matte Lipstick

SHADE BREAKDOWN





LIP GLOSS

OPAQUE. HIGH-SHINE. INTENSE COLOR.

PRICE \$16 US / \$17 CAD / £21 GBP

A full-pigment, weightless gloss formula in lacquer, metallic and sparkle finishes.

WHY YOU'LL LOVE IT

- Comfortable wearability
- Vanilla scented
- Mirror-like glossy finish
- Paddle-shaped applicator delivers color with precision and shapes the lips
- Cruelty-free and vegan
- Available in a wide array of shades (retailer assortments will vary)
- Available in 3 different finishes:
 - **Sparkle:** Translucent with multidimensional reflect
 - **Metallic:** Highly pigmented with intense shimmer
 - **Lacquer:** Full coverage with a high shine

HOW TO APPLY

- For a more natural, subtle look, apply your complementary neutral shade of **Lip Gloss** over bare lips. To amp up your go-to lip look, apply a matching shade of **Lip Gloss** as a topcoat over your favorite shade of **Matte Lipstick**. This combination also creates the effect of fuller lips.

PRO TIPS

- Use **Lip Gloss** as a topcoat over your favorite ABH matte lip products to give your lips a fuller appearance. Use any **Lip Gloss** shade with a metallic finish over your matte lip look as a glossy, metallic topcoat.
- For a more-sheer application, apply a small amount at the center of the bottom lip, then rub lips together to blend. For a full, high-shine finish, apply a single swipe on both the top and bottom lip.
- Generously apply **Lip Primer** to lips prior to your lip color application to create even longer-lasting staying power and prevent feathering at the lip line. Allow the lips to fully absorb the **Lip Primer** formula to give them a boost of hydration and make them ready for a smooth color application.
- After applying your lip color, create an extremely precise lip line by highlighting around the perimeter of the lips with **Pro Pencil**, then blending out the edges with **Brush 20**.

SHADE BREAKDOWN



PRODUCT PAIRINGS

Lip Primer
Liquid Lipstick
Matte Lipstick

CRYSTAL GLOSS

GLASS-LIKE SHINE. UNSTOPPABLE REFLECTION.

PRICE: \$20 USD / \$26 CAD



A crystal-clear lip gloss with a non-sticky feel that delivers glass-like shine.

WHY YOU'LL LOVE IT

- Universal crystal-clear shade for all skin tones
- Provides long-lasting, glass-like shine in one swipe
- Weightless, non-sticky formula with comfortable wearability
- Instantly gives the appearance of fuller-looking lips
- Ultra-smooth formula glides across lips with ease
- Flat-paddle shaped applicator delivers the perfect amount of product and precise application
- Can be worn over bare lips or layered with liner and lipstick for extra dimension
- Peach-scented
- This formula is: Vegan, Cruelty-Free, Alcohol-Free, Paraben-Free, Oil-Free
- Dermatologist tested and non-comedogenic

HOW TO APPLY

Apply **Crystal Gloss** to the center of the top and bottom lip. Use the tip of the flat-paddle applicator to shape the lip line with precision.

TAKE IT TO THE NEXT-LEVEL

Shape the lips with **Brow Definer** for a bare and defined look. Or go ultra-dimensional by adding your favorite shade of **Matte Lipstick**.

PRO TIPS

- Apply **Crystal Gloss** to the center of the lips for extra volume.
- For dry lips, apply **Lip Primer** prior to application.
- Try a deep shade of **Brow Definer** for ultra-dimension.

PRODUCT PAIRINGS

Lip Primer
Matte Lipstick
Brow Definer

SHADE BREAKDOWN



GLASS
Crystal-Clear



DIAMOND GLOSS

DIAMOND REFLECT. LUMINOUS SHINE.

PRICE: **\$20 USD / \$26 CAD**



A luminous lip gloss with a smooth formula for a high-shine, diamond-reflect finish.

WHY YOU'LL LOVE IT

- Universal shade for all skin tones
- Delivers luminous shine with a diamond-reflect finish
- Provides long-lasting, high shine in one swipe
- Weightless, non-sticky formula with comfortable wearability
- Instantly gives the appearance of fuller-looking lips
- Ultra-smooth formula glides with ease
- Flat-paddle shaped applicator delivers the perfect amount of product and precise application
- Can be worn over bare lips or layered with liner and lipstick for extra dimension
- This formula is: Vegan, Cruelty-Free, Alcohol-Free, Paraben-Free, Oil-Free
- Vanilla-scented
- This formula is: Vegan, Cruelty-Free, Alcohol-Free, Paraben-Free, Oil-Free
- Dermatologist tested and non-comedogenic

HOW TO APPLY

BARE LIPS -

- Apply to the center of the top and bottom lip. Use the tip of the flat-paddle applicator to shape the lip line with precision.

PAIR WITH LINER -

- Shape and define the lips using **Brow Definer**.
- Apply **Diamond Gloss** to the center of the top and bottom lip.

PAIR WITH LINER + LIPSTICK -

- Shape and define the lips using **Brow Definer**.
- Add color with **Matte Lipstick**.
- Finish by applying **Diamond Gloss** to the center of the top and bottom lip.

PRODUCT PAIRINGS

Lip Primer
Matte Lipstick
Brow Definer

PRO TIPS

- Wear over bare lips for natural lip color with high shine.
- Apply to the center of the lips for extra volume.
- Pair with **Brow Definer** and **Matte Lipstick** for extra dimension.
- For dry lips, apply **Lip Primer** prior to application.
- For dry lips with flakiness, use a gentle lip exfoliator prior to application.

SHADE BREAKDOWN



HONEY DIAMOND
Shimmering Honey Nude



MATTE LIPSTICK

36 SHADES. ULTRA-MATTE. INTENSE COLOR.

PRICE \$18 US / \$23 CAD / £18 GBP

A full-pigment lip color with a velvety-smooth, ultra-matte finish and comfortable wearability.

WHY YOU'LL LOVE IT

- Full-pigment color
- Easy to apply, velvety-smooth formula
- Delivers an ultra-matte finish
- Comfortable wearability that seamlessly glides on the lips
- Features a wide range of neutral tones, bright accent shades and bold colors
- Features a selection of nude shades that complement every skin tone and undertone
- Precise heart-shaped bullet provides excellent control for defining the lip line and effortlessly creating a balanced application
- Cruelty-free and vegan
- Available in 36 shades

HOW TO APPLY

- Begin by outlining the Cupid's bow. Fill in the remainder of the top lip. Outline the bottom lip and fill. Highlight the perimeter of the lips using **Pro Pencil** and blend into the skin using **Brush 20** or **Brush 3** to create clean edges.

PRO TIPS

- Using **Brush 3**, work directly off the **Matte Lipstick** bullet to further define the lip line or detail the lips.
- For a simple application technique, slightly diffuse your lip line using **Brush 18** for added fullness and dimension.
- Apply **Lip Primer** just before your **Matte Lipstick** application to hydrate lips and create a base for lip color to adhere. For best results, apply a thin layer of **Lip Primer** and allow the formula to absorb into lips prior to your color application; this will help keep the lip color ultra-matte.
- To create volume, apply a lighter shade of **Matte Lipstick** in the center of the lips or top with **Lip Gloss**.

SHADE BREAKDOWN



PRODUCT PAIRINGS

Lip Primer
Lip Gloss
Liquid Lipstick



LIP STAIN

LIGHTWEIGHT, RICH COLOR. ULTIMATE STAYING POWER.

PRICE **\$18 USD / \$24 CAD**

An incredibly long-lasting lip stain with rich matte color, weightless feel and serious staying power.

WHY YOU'LL LOVE IT

- Waterproof formula lasts all day and won't budge
- Features long-lasting, rich matte pigment that stains lips with luxurious, even color
- Smooth, lightweight formula gives you a cool, comfortable, natural feel and won't dry out lips
- Precision doe-foot applicator delivers the perfect amount of color every time
- Cherry scented
- Formulated without parabens, gluten, phthalates, talc, alcohol and mineral oil
- Enriched with sodium hyaluronate and glycerin
- Dermatologist tested
- Cruelty-free and vegan
- Available in 6 shades with color-matching components

HOW TO APPLY

Begin by outlining the Cupid's bow with the precision doe-foot applicator. Press the tip onto each side of the bow to emphasize the shape. Then, sweep the applicator from one corner of the mouth toward the center of the lips. Repeat on the other side. Outline the bottom lip and sweep the applicator from each corner toward the center of the lips. Allow the formula to dry in place

PRO TIPS

- Only a thin layer is required to achieve a full-colored lip look. Layer for more color saturation and intensity as desired.
- Wait a few seconds after application to allow the color to lock into place.
- Layer different shades to create your own custom lip colors.
- To add hydration to dry lips, apply **Lip Primer** in advance to allow the formula to fully absorb into the lips prior to your **Lip Stain** application.
- For a clean-looking finish, highlight the perimeter of the lips using **Pro Pencil** and blend into the skin using **Brush 20**.

SHADE BREAKDOWN



GRAY MAUVE
Light Smoky Plum



ORCHID
Magenta



HOT PINK
Bright Pink



DUSTY ROSE
Rosy Nude



BLACK CHERRY
Deep Cherry Red



ROSEWOOD
Light Rosy Brown

PRODUCT PAIRINGS

Pro Pencil
Brush 20
Brow Definer
Lip Gloss





LIP PALETTE

ENDLESS OPTIONS. CUSTOMIZE YOUR POUT.

PRICE **\$48 US / \$62 CAD / £48 GBP**

A professional palette containing 18 full-pigment matte lip shades—from neutrals and primaries to bold brights.

WHY YOU'LL LOVE IT

- Smooth formula delivers rich pigment and a comfortable matte finish
- Includes 18 professional lip shades, including neutrals, primary colors, black and white—so customization options are endless
- Includes a metal mixing plate and a dual-ended lip brush + spatula for professional-quality application
- Easily customize any lip shade in 1 palette
- This all-in-one palette is ready for travel and is an essential for any makeup artist's kit
- Cruelty-free and vegan

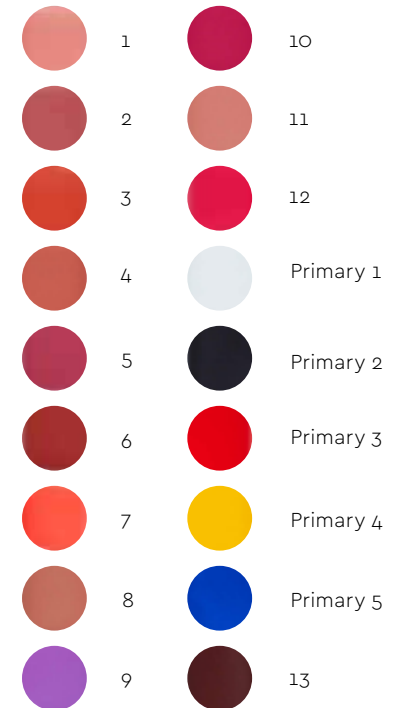
HOW TO APPLY

- Using the spatula, scoop out a minimal amount of product and distribute it onto the metal mixing plate. Wear colors alone or mix them together to create your own custom shades. Load up the brush end using a side-to-side motion. To apply, first shape the Cupid's bow using the lip brush. To fill the upper lip, start from the corners and pull up toward the Cupid's bow. For the lower lip, start in the center of the lip and work out toward the corners to define the lip line.

PRO TIPS

- Use the primary colors to transform any lip shade from warm to cool.
- To add volume to any lip look, mix **Primary 1 - White** into your lip shade and apply to the center of the lips.
- To deepen your lip shade, mix in **Primary 2 - Black**. This will also help add structure to the lip look.
- Create custom shades to color correct or cover up tattoos.

SHADE BREAKDOWN



PRODUCT PAIRINGS

Pro Pencil
Lip Primer
Lip Gloss

LIP PRIMER

PRIME LIPS FOR A SEAMLESS APPLICATION

PRICE \$16 U.S. / \$21 CAD / £17 GBP



A colorless, lightweight primer that hydrates, smoothes and preps lips for a seamless lip color application.

WHY YOU'LL LOVE IT

- Smooth wax formula
- Prevents color from fading and feathering
- Ideal for layering underneath **Lip Gloss** or **Matte Lipstick**
- Creates a hydrated canvas for matte lip color to adhere, yet pigment still remains ultra-matte
- Can also be used alone as a hydrating lip conditioner
- Cruelty-free and vegan

HOW TO APPLY

- Apply one swipe of **Lip Primer** on both the top and bottom lips prior to your **Lip Gloss** or **Matte Lipstick** application.

PRO TIPS

- Generously apply **Lip Primer** to lips prior to your lip color application to create even longer-lasting staying power and prevent feathering at the lip line. Allow the lips to fully absorb the **Lip Primer** formula to give them a boost of hydration and make them ready for a smooth color application.
- For a stained lip look, prep with **Lip Primer** and then press **Eye Shadow** onto the center of the lips.

PRODUCT PAIRINGS

Liquid Lipstick
Lip Gloss
Matte Lipstick



UNDRESSED LIP SET

5 WAYS TO GET NUDE

PRICE \$40 U.S. / \$52 CAD / £56 GBP

A limited-edition set featuring 5 all-new nude lip shades.

WHY YOU'LL LOVE IT

- Each shade comes in an exclusive component with a custom nude-colored cap
- Formulated without gluten, parabens or phthalates
- Dermatologist tested
- Cruelty-free and vegan

LIQUID LIPSTICK

- Full-coverage, ultra-saturated pigment
- Dries down to a weightless matte or metallic finish
- Comfortable, long-lasting formula
- Features a double-sided flat applicator with a rounded tip that distributes the perfect amount of product for precise, even application

LIPGLOSS

- Comfortable wearability
- Vanilla scented
- Mirror-like glossy finish
- Features a double-sided paddle-shaped applicator with a rounded tip that delivers color with precision and shapes the lips

HOW TO APPLY

- Begin by using the edge of the custom paddle-shaped applicator to line the Cupid's bow with precision. Fill in the remainder of the top lip using the flat side of the applicator. Outline the bottom lip and fill.

SHADE BREAKDOWN



PRO TIPS

- Create a fuller lip effect by applying a lighter shade of **Liquid Lipstick** onto the center of the lips and then lining the lips with a deeper shade.
- Wear these **Liquid Lipstick** shades alone or layer with the lip topper or **Lip Gloss** shade for a light-reflective, plumped-up lip look.
- To create the look of a sheer lip stain with a natural finish, apply a small amount of **Liquid Lipstick** with your fingertip.

PRODUCT PAIRINGS

Lip Primer
Matte Lipstick
Pro Pencil



MINI LIP GLOSS SET SPRING 2020

4 NEW NUDES IN HIGH GLOSS.

PRICING: **\$28 U.S. / \$37 CAD / £29 GBP**

- A limited-edition mini set of 4 new nude **Lip Gloss** shades that feature a full-pigment formula with a lacquer or sparkle finish.

WHY YOU'LL LOVE IT

- Weightless formula with comfortable wearability
- Vanilla scented
- Mirror-like glossy lip color with a lacquer or sparkle finish
- Flat paddle-shaped applicator delivers color with precision and shapes the lips
- Cruelty-free

HOW TO APPLY

- Begin by outlining the Cupid's bow with the precise applicator. Fill in the remainder of the top lip. Outline the bottom lip and fill.

PRO TIPS

- Use **Lip Gloss** as a topcoat over your favorite ABH matte lip products to give your lips a fuller appearance.
- For a more sheer application, apply a small amount at the center of the bottom lip, then rub lips together to blend. For a full, high-shine finish, apply a single swipe on both the top and bottom lip.
- Use **Lip Primer** before applying **Lip Gloss** to help prevent feathering at the lip line.

PRODUCT PAIRINGS

Lip Primer
Matte Lipstick
Liquid Lipstick

SHADE BREAKDOWN



HAUTE HOLIDAY MINI LIP GLOSS KIT

4 ALL-NEW SHADES. HIGH SHINE. HOLIDAY NUDES.

PRICE \$28 USD / \$37 CAN / £29 GBP



A limited-edition mini set of 4 new high shine **Lip Gloss** shades.

WHY YOU'LL LOVE IT

- Comfortable wearability
- Vanilla scented
- Mirror-like glossy finish
- Paddle-shaped applicator that delivers the perfect amount of product and precise application
- Paraben and cruelty-free

HOW TO APPLY

For a more natural, subtle look, apply **Lip Gloss** over bare lips. Make it extra-haute by pairing with **Brow Definer** to line and shape the lips, and your favorite shade of **Matte Lipstick** for color.

PRO TIPS

- Apply **Lip Primer** to prep the lips and create even longer-lasting staying power.
- For added precision, apply **Pro Pencil** around the perimeter of the lip and blend using **Brush 20**.

PRODUCT PAIRINGS

Brow Definer
Matte Lipstick
Lip Primer

SHADE BREAKDOWN



SWEET
Ultra-light pink



CLOUDS
Shimmering light
bubblegum pink with



BUBBLY
Shimmering nude sand
with gold reflects



TASTY
Light beige

BRUSHES



A1 PRO BRUSH

FLAT DEFINER BRUSH.

PRICE \$18 US / \$23 CAD / £18 GBP

A flat, square-shaped brush with firm synthetic fibers that is ideal for precisely defining eyes along the lash line with cream and powder products.

WHY YOU'LL LOVE IT

- Thinly packed fibers allow for creating precise lines and definition along the lash line
- Premium synthetic fibers are ideal for applying cream and powder products
- Perfect size for tightlining the eye area
- Perfect size for precise contouring along the sides of the nose
- Cruelty-free

HOW TO APPLY

- Easily line and define the eyes with precision by using **A1 Pro Brush** to apply color products along the upper and lower lash lines.
- Can be used wet or dry.

PRO TIPS

- For a smoky eye effect, use **A1 Pro Brush** to press shadow into the lash line.
- Use **A1 Pro Brush** as a liner brush with **Waterproof Crème Color**.

PRODUCT PAIRINGS

Waterproof Crème Color
Eye Shadow Singles
Eye Shadow Palettes



A2 PRO BRUSH

PRECISE CONCEALER BRUSH.

PRICE \$18 US / \$23 CAD / £18 GBP

A small, dome-shaped brush with tapered synthetic fibers that is ideal for applying and seamlessly blending emollient-based products on the face and under-eye area.

WHY YOU'LL LOVE IT

- Thinly packed fibers allow for clean application and precise placement
- Premium synthetic fibers make this brush ideal for applying and seamlessly blending cream and liquid products
- Ideal for precise application of concealer, especially around the under-eye area or for spot concealing/color correcting
- Small, tapered shape fits perfectly under the eye area and on the lid
- Cruelty-free

HOW TO APPLY

- Use **A2 Pro Brush** to apply concealer with precise placement or to press shadows onto the lid.

PRO TIPS

- **A2 Pro Brush**'s size is also perfect for applying lip products. Use to apply **Matte Lipstick**, **Lip Gloss** or **Liquid Lipstick** with precision.
- Use **A2 Pro Brush** to apply glow products under the brow bone for the perfect highlight.

PRODUCT PAIRINGS

Matte Lipstick

Eye Shadow Palettes

Waterproof Crème Color



A3 PRO BRUSH

FIRM SHADER BRUSH.

PRICE \$18 US / \$23 CAD / £18 GBP

A small dome-shaped shading brush with dense synthetic fibers that is ideal for applying and blending eye shadow.

WHY YOU'LL LOVE IT

- Soft, densely packed fibers deliver maximum color payoff and smooth application
- Premium synthetic fibers make this brush ideal for applying and blending cream and powder products
- Round shape fits perfectly on the lid when packing shadow
- Tip of the brush fits perfectly into the crease for definition
- Cruelty-free

HOW TO APPLY

- Use the brush's round tapered tip to apply eye shadow with detailed application for maximum color payoff and intensity.
- Can be used wet or dry.

PRO TIPS

- Use **A3 Pro Brush** to buff and blend concealer and to spot-correct small areas.
- Use this brush to layer and blend eye shadow or glow products over any matte lip application to create a metallic lip look.

PRODUCT PAIRINGS

Eye Shadow Palettes
Contour Powder Kit
Moonchild Glow Kit



A4 PRO BRUSH

CREAM SHADOW BRUSH.

PRICE \$20 US / \$26 CAD / £20 GBP

A flat brush with tapered synthetic fibers that is ideal for multiuse application of emollient-based and powder products on the eyes and face.

WHY YOU'LL LOVE IT

- Densely packed, soft fibers make this brush excellent for applying cream concealer and highlighter products to the face, under-eye area and lids
- Premium synthetic fibers make this brush ideal for applying powder and emollient-based products
- Fibers taper into a round shape that fits perfectly within the delicate areas of the face
- Size of the brush allows for precise placement and smooth, easy blending
- Cruelty-free

HOW TO APPLY

- Use the flat side of the brush to deposit product for coverage. Then, use the round tip to diffuse and blend edges.
- Can be used wet or dry.

PRO TIPS

- Use **A4 Pro Brush** to deliver precise placement of **Liquid Glow** and **Contour Cream**.
- Use this brush to place product where you would like the most intensity; then, diffuse product using a makeup sponge.

PRODUCT PAIRINGS

Liquid Glow
Luminous Foundation
Eye Primer



A5 PRO BRUSH

SMALL BLENDING BRUSH.

PRICE \$25 US / \$33 CAD / £26 GBP

A small, dome-shaped brush with tapered synthetic fibers that is ideal for applying and blending powder and emollient-based products on the eyes and face.

WHY YOU'LL LOVE IT

- Long, round, tapered shape is ideal for softly buffing or blending out powder, cream and liquid products for a diffused finish
- Premium synthetic fibers make this brush ideal for blending powder and cream products
- Size of the brush fits perfectly in the under-eye area and on the high points of the face
- Size of the brush is excellent for blending out concealer or color corrector
- Cruelty-free

HOW TO APPLY

- Use this ultra-soft, synthetic brush to easily pick up powder product and evenly blend out on the lid or into the crease.
- Can be used wet or dry.

PRO TIPS

- Use this brush to buff **Waterproof Crème Color** onto the lid as an eye shadow base.

PRODUCT PAIRINGS

Eye Shadow Palettes
Liquid Glow
Contour Powder Kit



A6 PRO BRUSH

BUFF AND BLEND BRUSH.

PRICE \$21 US / \$27 CAD / £21 GBP

A small, round brush with dense synthetic fibers that is ideal for expertly applying, buffing and blending powder and emollient-based products on the eyes and face.

WHY YOU'LL LOVE IT

- Round, dome-shaped brush allows for smooth application and blending for a seamless finish
- Premium synthetic fibers work great with liquid and cream products
- Size of the brush fits perfectly on the high points of the face and under-eye area, making it ideal for highlighting
- Cruelty-free

HOW TO APPLY

- Use **A6 Pro Brush** to buff and blend out products on the skin, diffusing the product with maximum control. The super-soft fibers feel delicate around the eye area, making this brush ideal for sensitive skin types.
- Can be used wet or dry.

PRO TIPS

- Use **A6 Pro Brush** to seamlessly buff and blend contour products around the nose area.
- Use this densely packed synthetic brush to blend emollient-based products around the eye area or delicate parts of the face with ease.

PRODUCT PAIRINGS

Blush Trio
Loose Setting Powder
Contour Powder Kit



A7 PRO BRUSH

SMALL BLENDING BRUSH.

PRICE \$21 US / \$27 CAD / £22 GBP

A fluffy, dome-shaped brush with synthetic fibers that is ideal for soft application and blending of powder and emollient-based products on the face.

WHY YOU'LL LOVE IT

- Long, rounded shape allows for a pressing and rolling motion when applying for a seamless finish
- Premium synthetic fibers softly apply and blend powder, cream and liquid products on the face with ease
- Long fibers fit perfectly on the top of the cheekbones, under the eye area and on the contours of the face
- Cruelty-free

HOW TO APPLY

- Use this brush's ultra-soft, moderately dense fibers for a very controlled application of both cream and powder products. The flat side can be used to press product onto the skin while the tip of the brush is great for diffusing product.
- Use **A7 Pro Brush** to press powders onto the skin when setting makeup.
- Can be used for application on the face and body.
- Can be used wet or dry.

PRO TIPS

- Use **A7 Pro Brush** to perfectly blend **Liquid Glow** and **Highlight & Contour Sticks** onto the face and body.
- This brush is ideal for application on the body, specifically the décolletage.

PRODUCT PAIRINGS

Blush Trio
Loose Setting Powder
Contour Powder Kit



A10 PRO BRUSH

DIFFUSER BRUSH.

PRICE \$21 US / \$27 CAD / £21 GBP

A fluffy, tapered brush with natural fibers that is ideal for applying and diffusing powder products around the eyes and face.

WHY YOU'LL LOVE IT

- Size and shape make this brush ideal for applying and blending eye shadow and diffusing edges
- Soft, premium natural fibers taper into a fluffy shape that fits perfectly within the crease of the eye and contours of the face
- White bristles allow you to see how much product is on the brush
- Cruelty-free

HOW TO APPLY

- Use the flat side to deposit product with more intensity.
- Use the tip of the brush to diffuse and blend out color.
- Use this soft, natural-fiber brush to pick up powder products, evenly apply and blend out color along the crease until desired intensity is achieved.

PRO TIPS

- Use **A10 Pro Brush** to seamlessly buff and blend contour powder around the nose area.
- This fluffy brush is ideal for precise placement and seamless blending of powder highlighter.

PRODUCT PAIRINGS

Eye Shadow Palettes
Contour Powder Kit
Sun Dipped Glow Kit



A12 PRO BRUSH

DIFFUSER BRUSH.

PRICE \$20 US / \$26 CAD / £20 GBP

A small, round fluffy brush with natural fibers that is ideal for seamlessly applying and blending powder products on the eyes and face.

WHY YOU'LL LOVE IT

- Soft fluffy brush has a round shape that fits perfectly into the crease, allowing you to easily diffuse shadow for a seamless finish
- Premium natural fibers make this brush ideal for applying and blending powder products
- Cruelty-free

HOW TO APPLY

- Use this soft, fluffy brush to pick up powder products and diffuse color along the crease of the eye, seamlessly blending eye shadow into the skin without any harsh edges.
- **A12 Pro Brush** can be used on the eyes and face for an airbrushed-looking finish.

PRO TIPS

- Create an ultra-diffused eye look by blending the edges of your shadow application using a clean **A12 Pro Brush**.
- This brush is ideal for detailing the face's contours when applying **Contour Powder Kit**.

PRODUCT PAIRINGS

Eye Shadow Singles
Contour Powder Kit
Eye Shadow Palettes



A13 PRO BRUSH

MEDIUM SHADER BRUSH.

PRICE \$20 US / \$26 CAD / £20 GBP

A soft, dome-shaped brush with densely packed natural fibers that is ideal for precise shading and buffing on the eyes, especially metallic eye shadows and glitters.

WHY YOU'LL LOVE IT

- Domed shape fits perfectly onto the lid space for precise placement of color and glitter
- Densely packed natural fibers allow for precise shading and buffing as it picks up and deposits metallic and glitter formulas with maximum payoff
- Also works great with powder and cream products
- Cruelty-free

HOW TO APPLY

- Use this small, densely packed eye shadow brush to easily pick up and deposit large amounts of product for intense color payoff.
- Use this small, dome-shaped brush for precise shading and buffing on the eye area.

PRO TIPS

- Pair **A13 Pro Brush** with **Dewy Set Setting Spray** when applying metallic or duo chrome shades to the eye area for added intensity and reflect.
- The brush's size is perfect for highlighting the Cupid's bow and the bridge of the nose.

PRODUCT PAIRINGS

Waterproof Crème Color
Eye Shadow Palettes
Sugar Glow Kit

A14 PRO BRUSH

PENCIL BRUSH.

PRICE \$18 US / \$23 CAD / £18 GBP



A small, round pencil brush with firm natural fibers that is ideal for detailed application and precise blending on the eyes.

WHY YOU'LL LOVE IT

- Size of the brush fits perfectly into the crease and underneath the lash line, making it ideal for detailed application of eye shadow and contour products in the corners and crease
- Premium natural fibers form a rounded, tapered point for precise placement and blending
- Can be used to apply and blend cream and powder products
- White bristles allow you to see how much product is on the brush
- Cruelty-free

HOW TO APPLY

- Use this brush for detailed application in the crease or outside corner of the eye.
- The dense, tiny bristles easily fit into the crease of the eye and along the lash line. Diffuse color and create depth with expert precision when applying color to the eyes.

PRO TIPS

- Can be used to place product and blend edges.
- Can be used to blend out cream liner for a smoky effect.
- The small size also makes this brush ideal for precisely applying product to the inner corner and highlighting the brow bone.

PRODUCT PAIRINGS

Eye Shadow Palettes
Darkside Waterproof Gel Liner
Sugar Glow Kit

A16 PRO BRUSH

LARGE SHADOW BRUSH.

PRICE \$25 US / \$23 CAD / £18 GBP



A large flat brush with tapered natural fibers that is ideal for applying and shading powder products on the eyes and face.

WHY YOU'LL LOVE IT

- Flat rounded shape works perfectly for packing shadow and contouring
- Premium natural fibers make this brush ideal for applying and blending powder products
- Size of the brush fits perfectly on the lid, ideal for eye shadow application
- The flat side can be used to deposit product, while the tip can be used to shade and blend
- Cruelty-free

HOW TO APPLY

- Use **A16 Pro Brush** to evenly shade and blend powder products across the entire lid. The paddle shape allows for quick, smooth application on the whole lid space or for precise application of powder products on the face.

PRO TIPS

- **A16 Pro Brush** is perfect for applying color all over the lid—from lash line to brow bone.
- Use this large paddle-shaped brush to highlight the cheekbones with precision.
- Use to apply highlight to the brow bone, Cupid's bow and upper cheek with precision.

PRODUCT PAIRINGS

Eye Shadow Singles
Contour Powder Kit
Sugar Glow Kit



A18 PRO BRUSH

ANGLED CHISELER BRUSH.

PRICE \$30 US / \$39 CAD / £31 GBP

A large, slanted brush with soft natural fibers that is ideal for applying powder products to sculpt and define facial contours.

WHY YOU'LL LOVE IT

- Angled shape allows for precise definition and fits perfectly into the contours of the face, such as the cheekbones, jawline and forehead
- Soft, natural fibers let you apply and blend powder products seamlessly and is ideal for applying contour products
- Densely packed natural fibers allow for high product pickup and deliver maximum payoff and coverage
- Cruelty-free

HOW TO APPLY

- Use this large, angled natural-fiber brush for application of both powder and cream products on the face and body.
- Use **A18 Pro Brush** to create a dramatic contour application by easily gliding along the contours of the face with precision. The slanted shape allows for maximum control when applying and blending powder or cream products.

PRO TIPS

- This large, densely packed angled brush is ideal for body contouring.
- Contour the sides of the nose with ease using the straight edge of **A18 Pro Brush**.

PRODUCT PAIRINGS

Contour Powder Kit
Contour & Highlight Sticks
Powder Bronzer



A19 PRO BRUSH

BLUSH BRUSH.

PRICE \$26 US / \$39 CAD / £26 GBP

A medium-sized powder brush with natural fibers that is ideal for seamlessly applying and blending face powders.

WHY YOU'LL LOVE IT

- Medium size and round shape make this brush ideal for applying product in the contours of the face
- Premium natural fibers allow for easy application and blending of powder products
- Densely packed fibers allow for precise placement and desired level of color payoff
- Cruelty-free

HOW TO APPLY

- Use this medium-sized brush for powder application on both the face and body. The thickness and density of the brush's fibers allow you to apply powders with control for moderate to high color payoff.

PRO TIPS

- **A19 Pro Brush**'s densely packed fibers are ideal for an ultra-saturated bronzer application.
- Place the brush where you would like the most color payoff and then diffuse edges.

PRODUCT PAIRINGS

Blush Trio
Powder Bronzer
Loose Setting Powder



A20 PRO BRUSH

LARGE POWDER BRUSH.

PRICE \$35 US / \$46 CAD / £36 GBP

A large powder brush with tapered natural fibers that is ideal for seamlessly applying and blending powders on the face and body.

WHY YOU'LL LOVE IT

- Large tapered shape is perfect for sweeping powder in the contours, all over the face, or within the larger areas of the face/body
- Long, premium natural fibers allow for application in a sweeping motion, giving you buildable application and easy blending
- Densely packed fibers allow you to easily apply and diffuse powder products over a large area for a natural-looking finish
- Cruelty-free

HOW TO APPLY

- Use **A20 Pro Brush** for application on both the face and body. This large fluffy brush applies and blends powder products for a soft diffusion of color.

PRO TIPS

- Use this brush to seamlessly blend powder complexion products.
- The brush's tapered shape is ideal for accentuating the cheekbone.
- **A20 Pro Brush** easily and quickly applies product to anywhere on the body.

PRODUCT PAIRINGS

Blush Trio
Powder Bronzer
Loose Setting Powder



A22 PRO BRUSH

POINTED CHEEK BRUSH.

PRICE \$30 US / \$39 CAD / £31 GBP

A small round brush with tapered natural fibers that is ideal for applying powder products to precise areas of the face

WHY YOU'LL LOVE IT

- Round, tapered shape fits perfectly onto the small areas of the face, such as the cheek plane, for precise application and blending in a sweeping motion
- Premium natural fibers make this brush ideal for applying blush, highlight and contour powder products
- Use the flat side to deposit the most pigment and payoff, then use the tip of the brush to blend and diffuse edges
- Cruelty-free

HOW TO APPLY

- This brush's tapered natural fibers make it ideal for precisely applying powder products on the face. Begin application where most intensity is desired. Then, diffuse the edges.

PRO TIPS

- Using **A22 Pro Brush** and the **Contour Powder Kit**, highlight and set the under-eye area with precise placement.
- Apply glow, blush and contour products with expert precision.
- Dust off excess powder on the back of your hand before applying.

PRODUCT PAIRINGS

Contour Powder Kit

Blush Trio

Sun Dipped Glow Kit



A23 PRO BRUSH

LARGE TAPERED BLENDING BRUSH.

PRICE **\$25 US / \$33 CAD / £26 GBP**

A medium, dome-shaped diffuser brush with soft, tapered natural fibers that is ideal for sweeping powder over the high points of the face and body.

WHY YOU'LL LOVE IT

- Medium size and round shape make this brush ideal for application on the high points of the face
- Premium natural fibers make this brush perfect for placing powder highlight onto the face and body with precision
- Soft, tapered fibers pick up the perfect amount of product, allowing you to apply with ease
- Cruelty-free

HOW TO APPLY

- Use **A23 Pro Brush** to precisely apply and blend powder products onto the high points of the face and body.
- The flat side of the brush can be used to place highlight with maximum payoff or deposit product for the most intensity. The tip of the brush can be used to diffuse or blend edges.
- Can be used with powder and cream products.

PRO TIPS

- Use **A23 Pro Brush** for contouring the face or body.
- This brush is ideal for applying both blush and glow products.

PRODUCT PAIRINGS

Sugar Glow Kit

Blush Trio

Contour Powder Kit



A24 PRO BRUSH

MEDIUM SHADOW BRUSH.

PRICE **\$23 US / \$30 CAD / £24 GBP**

A medium flat brush with tapered natural fibers that is ideal for applying powder products on the eyes and face.

WHY YOU'LL LOVE IT

- Medium size and tapered shape make this brush perfect for applying eye shadow to the eye area as well as contour products to the face
- Premium natural fibers make this brush ideal for applying powder products
- Flat, tapered shape fits perfectly on the lid and allows for packing color with maximum payoff
- Cruelty-free

HOW TO APPLY

- **A24 Pro Brush's** medium size and tapered fibers allow for quick and even application on the entire lid.
- The flat side of the brush can be used to deposit product for high pigment payoff. The tip of the brush can be used for shading and blending.

PRO TIPS

- Use **A24 Pro Brush** to pack ultra-saturated color onto the lid space with ease.
- Use this brush with your favorite **Glow Kit** to highlight the high points of the face with expert precision.

PRODUCT PAIRINGS

Eye Shadow Palettes
Contour Powder Kit
Sun Dipped Glow Kit



A25 PRO BRUSH

TAPERED BLENDING BRUSH.

PRICE \$25 US / \$30 CAD / £24 GBP

A small, round fluffy brush with tapered natural fibers that is ideal for applying and diffusing powder products on the eyes and face.

WHY YOU'LL LOVE IT

- Small, round tapered shape fits perfectly for precise placement and blending of color, especially in the crease of the eye
- Premium natural fibers make this brush perfect for seamlessly blending powder products
- Can be used to apply, blend and diffuse eye shadow
- Can be used for precise placement of highlight on the face
- Cruelty-free

HOW TO APPLY

- Use **A25 Pro Brush** to evenly disperse powder product through the crease of the eye, adding buildable coverage and pigment intensity.

PRO TIPS

- **A25 Pro Brush**'s densely packed fibers are ideal for an ultra-saturated bronzer application.
- Use the flat side of the brush to deliver the most color payoff and precise placement. Then, use the tip of the brush to diffuse the edges.

PRODUCT PAIRINGS

Eye Shadow Palettes
Moonchild Glow Kit
Contour Powder Kit



A26 PRO BRUSH

CREASE BLENDING BRUSH.

PRICE \$22 US / \$29 CAD / £23 GBP

A small, round fluffy brush with synthetic fibers that is ideal for seamlessly blending and diffusing powder and emollient-based products on the eyes and face.

WHY YOU'LL LOVE IT

- Small size and round shape allow you to blend in circular motions for a seamless finish
- Premium synthetic fibers make this brush perfect for softly blending and diffusing powder and emollient-based products onto the eyes and face
- Size of the brush fits perfectly on the high points of the face and under-eye area, making it ideal for precise placement of highlighter and concealer
- Cruelty-free

HOW TO APPLY

- Use **A26 Pro Brush** to buff and blend out powder product on the skin, diffusing product with maximum control.
- The super-soft fibers work delicately around the eye area, making it ideal for sensitive skin types.
- Can be used wet or dry.

PRO TIPS

- Use **A26 Pro Brush** to seamlessly buff and blend contour products around the nose.
- The brush's densely packed fibers blend emollient-based products with ease.

PRODUCT PAIRINGS

Eye Shadow Singles
Highlight & Contour Sticks
Contour Powder Kit



A27 PRO BRUSH

SMALL FIRM SHADER BRUSH.

PRICE \$21 US / \$27 CAD / £21 GBP

A short, rounded brush with firm, synthetic fibers that is ideal for maximum product application on the eyes or lips.

WHY YOU'LL LOVE IT

- Small size and flat, rounded shape make this brush ideal for eye shadow application or lip color application
- Premium synthetic fibers work perfectly with both powder and emollient-based products
- Densely packed fibers pick up and apply color products with maximum payoff
- Small, rounded shape fits perfectly on the lid, letting you press on shadow with precision and ease
- Thin tip can be used to cut or define the crease
- Also ideal for applying contour cream with precision
- Cruelty-free

HOW TO APPLY

- Because of **A27 Pro Brush's** synthetic fibers, you can press shadow onto the lid to evenly deposit ultra-matte shades and ensure maximum payoff with less fallout.
- Use the flat, tapered fibers to precisely place and detail for quick application with intense color payoff.
- **A27 Pro Brush** can be used with both powder or cream products on the eyes or lips.

PRO TIPS

- **A27 Pro Brush** is ideal for packing matte shadows onto the lid and inner corner of the eye.
- Use this short, densely packed brush to quickly apply **Lip Gloss** with precision and ease.

PRODUCT PAIRINGS

Eye Shadow Palettes
Waterproof Crème Color
Matte Lipstick

A28 PRO BRUSH

PRECISE EYELINER BRUSH.

PRICE \$16 US / \$21 CAD / £17 GBP



A short, narrow-tipped brush with extra-fine synthetic fibers that is ideal for expert detailing and precise lining on the eyes.

WHY YOU'LL LOVE IT

- Ultra-thin, tapered shape fits perfectly along the lash line, making this brush perfect for applying eyeliner and creating a winged liner
- Extra-fine premium synthetic fibers make this brush ideal for applying emollient-based products to the eye
- Brush's narrow size and thin tip allow you to achieve exact placement and clean application
- Thin bristles allow for applying in the waterline and tightlining the eye with precision
- Can be used for any detailed line work on the face and body
- Cruelty-free

HOW TO APPLY

- This ultra-thin detailing brush allows for easy application of both traditional and winged eyeliner looks. Use the brush to glide product along the shape and curve of the eye.
- Can be used wet or dry.

PRO TIPS

- Use this ultra-thin brush to create detailed graphic eyeliner looks.
- Dampen the brush before dipping into your eye shadow shades to create an eyeliner effect.

PRODUCT PAIRINGS

Waterproof Crème Color
DIPBROW® Pomade
Eye Shadow Palettes

A30 PRO BRUSH

DOMED KABUKI BRUSH.

PRICE \$24 US / \$31 CAD / £26 GBP



A medium-sized, round synthetic brush for blending emollient-based products on the face and body.

WHY YOU'LL LOVE IT

- Rounded dome shape allows for easy application and blending on the face and body
- Premium synthetic fibers make this brush ideal for applying and blending liquid and cream foundation
- Densely packed fibers allow for stippling of product for more coverage and diversity in application
- Cruelty-free

HOW TO APPLY

- **A30 Pro Brush** can be used on the face and body.
- The domed shape lets you easily apply product using circular motions for a seamless blend.
- Apply product directly to the skin, then buff and blend using **A30 Pro Brush** for best full-coverage results. For natural-looking, buildable coverage, apply product by working it into the brush first and then blending into the skin.

PRODUCT PAIRINGS

Luminous Foundation
Liquid Glow
Hydrating Oil
Glow Kits

SWISH LINER BRUSH

CRÈME LINER BRUSH.

PRICE \$18 US / \$23 CAD / £18 GBP



A fine-tipped, tapered brush with synthetic fibers that is ideal for expert detailing and precise lining on the eyes.

WHY YOU'LL LOVE IT

- Fine, tapered shape makes it quick and easy to create detailed application of eyeliner of various widths, from ultra-thin lines to thick winged liner looks
- Long, premium synthetic fibers make this brush ideal for applying emollient-based products along the lash line with precision
- Long fibers allow for application in longer strokes while the ultra-fine tip allows for exact detailing
- Cruelty-free

HOW TO APPLY

- Use this extremely tapered brush to apply liner along the lash line with ease. For best results, work cream or liquid liner into the ultra-thin tapered fibers to achieve a more precise application.
- Use the flat side to create wide lines. Use the tip of the brush to create thin lines.
- Can be used for any detailed line work on the face and body.

PRO TIPS

- Apply **Liquid Lipstick**, **Matte Lipstick** or **Lip Gloss** with expert precision.
- Create a detailed graphic eyeliner look using this ultra-tapered brush.
- **Swish Liner Brush** is ideal for creating faux freckles using **DIPBROW® Pomade**.

PRODUCT PAIRINGS

Waterproof Crème Color
DIPBROW® Pomade
Eye Shadow Palettes

BRUSH 3

LINER BRUSH.

PRICE \$18 US / \$23 CAD / £22 GBP



A small, tapered liner brush with synthetic fibers that is ideal for creating precise liner looks along the lash line, waterline and lip line.

WHY YOU'LL LOVE IT

- Small, tapered shape allows for a smooth, precise application of product along the lash line, waterline and lip line
- Premium synthetic fibers make this brush ideal for detailed application of powder and cream products
- Slim size makes it easy to achieve everything from sharp to bold lines
- Cruelty-free

HOW TO APPLY

- Use this small tapered brush to precisely line or detail the eyes and/or perfect the lips with powder or emollient-based products.
- Apply product using the side of the brush to create clean, long strokes.
- Apply product using the flat side of the brush to cover more space.
- Use this tightly packed precision brush to easily smudge shadow along the lash line or tightline.
- Can be used wet or dry.

PRO TIPS

- Use **Brush 3** to spot conceal blemishes.
- Use **Brush 3** to apply glow products to the inner corner of the eye with precision.
- This slim brush is ideal for applying **Waterproof Crème Color** to the eye area.

PRODUCT PAIRINGS

Waterproof Crème Color
Liquid Lipstick
Matte Lipstick



BRUSH 18

PRECISE CONCEALER BRUSH.

PRICE \$18 US / \$23 CAD / £22 GBP

A flat, dome-shaped brush with synthetic fibers that is ideal for multiuse application of powder and emollient-based products on the face and eyes.

WHY YOU'LL LOVE IT

- Slender size and tapered shape allow for smooth application of concealer to the under-eye areas and all-over color to the lids and lower lash line
- Premium synthetic fibers make this brush ideal for applying cream or liquid products with maximum coverage
- Fine, tapered shape and domed tip fit perfectly into delicate areas of the face for spot concealing and precise application of concealer
- Can also be used for applying contour cream and highlight products
- Cruelty-free

HOW TO APPLY

- Use **Brush 18** for a controlled and precise application of concealer to the under-eye area, color to the lid or lash line, or cream or powder products to hard-to-reach areas of the face.

PRO TIPS

- Use **Brush 18** to apply **Eye Shadow** or your favorite **Glow Kit** shades with precision when highlighting the brow bone.
- Use this precise brush to buff and blend **Waterproof Crème Color** onto the eye area for an eye shadow base application.
- Use **Brush 18** and work off the **Contour & Highlight Sticks** to apply with precise placement and build intensity where needed.

PRODUCT PAIRINGS

Contour & Highlight Sticks
Waterproof Crème Color
Eye Shadow Palettes